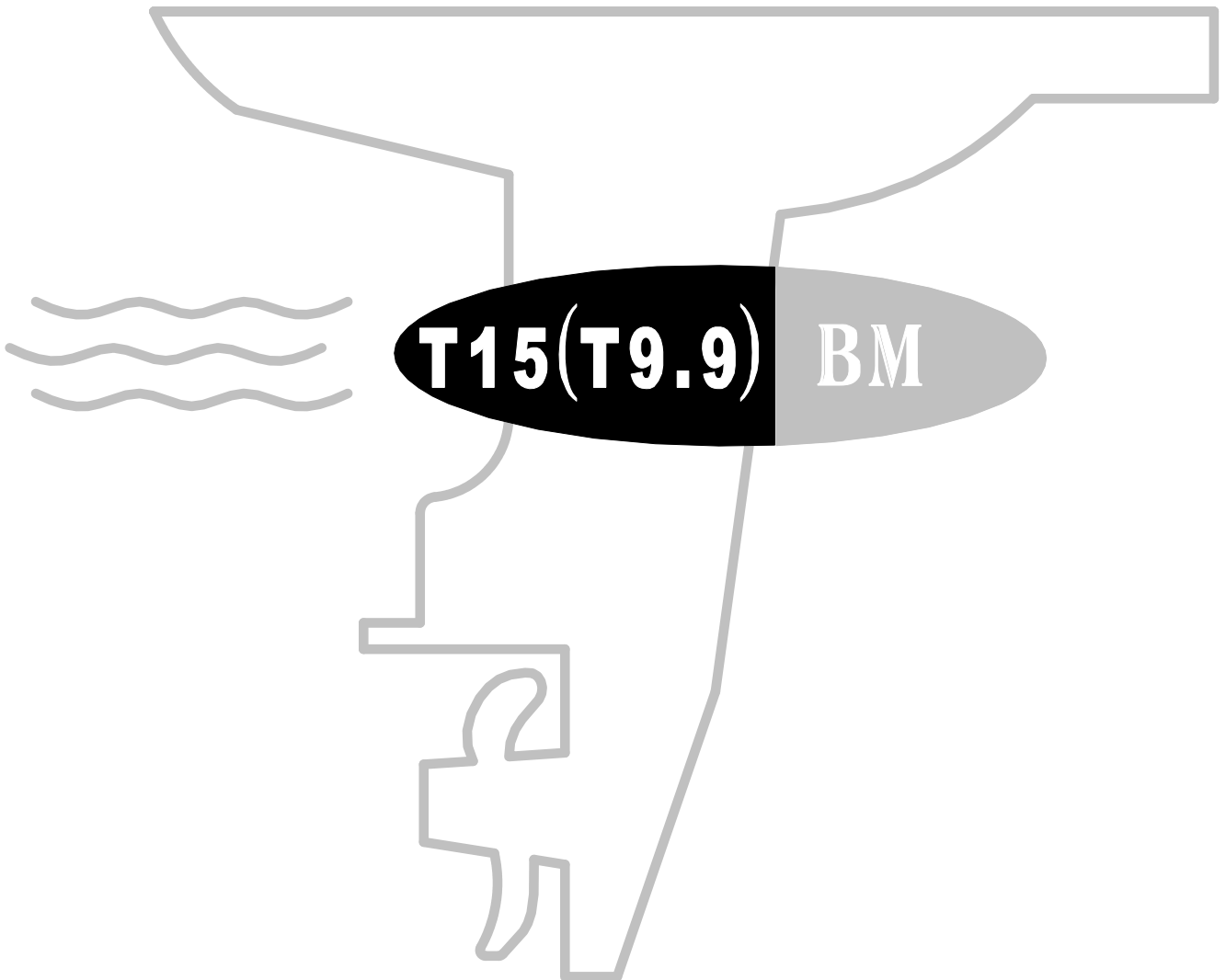




百胜

零件目录

PARTS CATALOGUE



苏州百胜动力机器股份有限公司

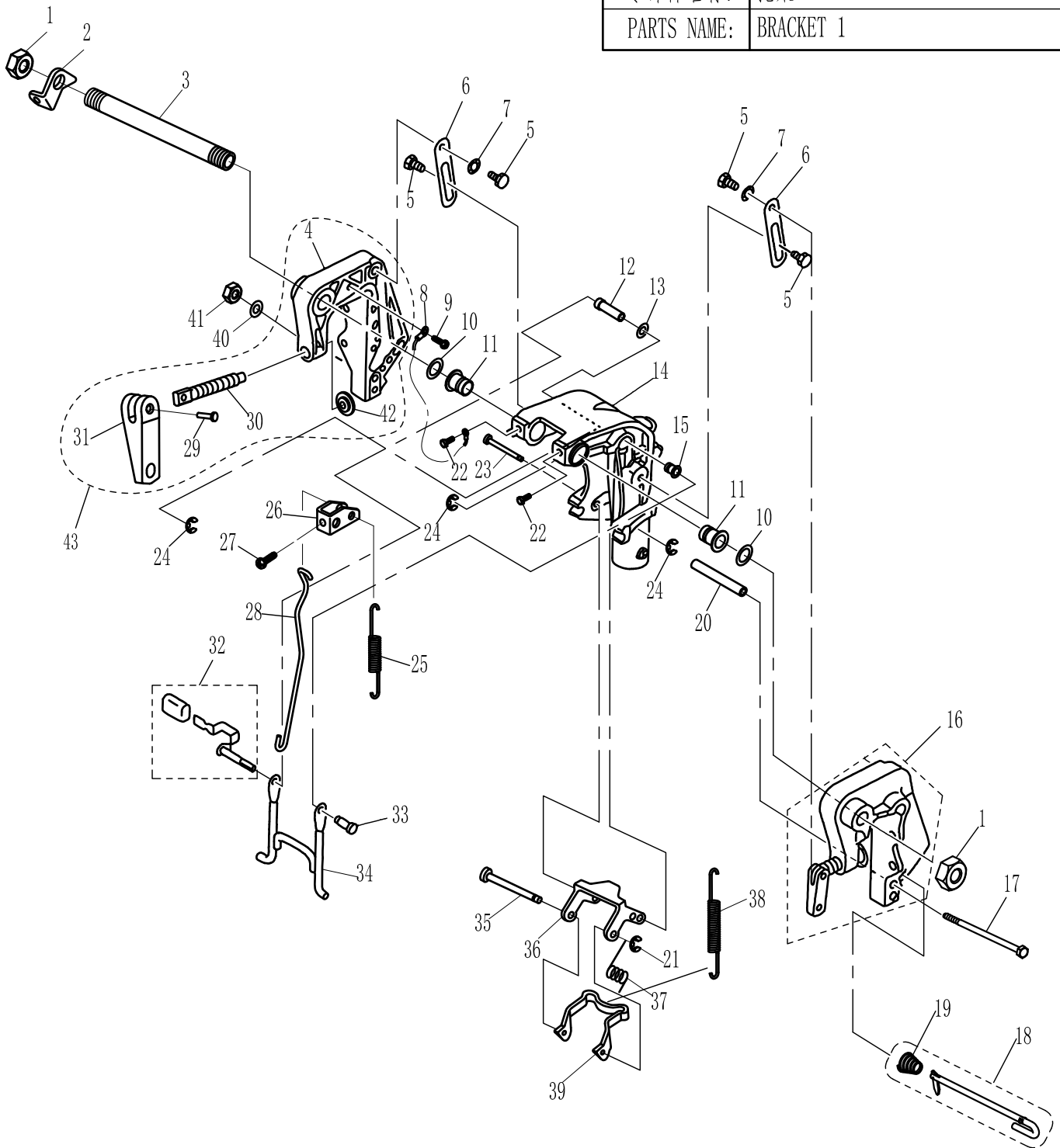
目录

CONTENTS

| | |
|---------------------------------|-------|
| 托架 1 | 1~2 |
| BRACKET 1 | 1~2 |
| 托架 2 | 3~4 |
| BRACKET 2 | 3~4 |
| 操舵系统 | 5~6 |
| STEERING | 5~6 |
| 水上装置壳体 | 7 |
| UPPER CASING | 7 |
| 底罩 | 8~9 |
| BOTTOM COWLING | 8~9 |
| 控制系统 | 10~11 |
| CONTROL SYSTEM | 10~11 |
| 水下装置壳体&驱动系统 1 | 12~14 |
| LOWER CASING & DRIVE 1 | 12~14 |
| 水下装置壳体&驱动系统 2 | 15~16 |
| LOWER CASING & DRIVE 2 | 15~16 |
| 电气 I | 17~18 |
| ELECTRICAL I | 17~18 |
| 进气系统 | 19~20 |
| INTAKE | 19~20 |
| 气缸&曲轴箱 | 21~22 |
| CYLINDER & CRANKCASE | 21~22 |
| 曲轴&活塞 | 23~24 |
| CRANKSHAFT & PISTON | 23~24 |
| 燃油系统 | 25 |
| FUEL | 25 |
| 起动机 | 26~27 |
| STARTER | 26~27 |
| 顶罩组件 | 28~29 |
| TOP COWLING ASSY | 28~29 |
| 化油器总成 | 30~31 |
| CARBURETOR ASSY | 30~31 |
| 控制系统(前操) | 32~33 |
| CONTROL SYSTEM (REMOTE CONTROL) | 32~33 |
| 操纵盒组件 | 34~36 |
| CONTROL BOX ASSY | 34~36 |
| 电气 II | 37~38 |
| ELECTRICAL II | 37~38 |
| 油箱 | 39 |
| FUEL TANK | 39 |
| 附录1(修理件) | 40 |
| APPENDIX 1 (REPAIR KIT) | 40 |
| 附录2(修理件) | 41~42 |
| APPENDIX 2 (REPAIR KIT) | 41~42 |
| 零件目录检索表 | I~IV |
| PARTS CATALOGUE INDEX | I~IV |

零部件名称: 托架 1

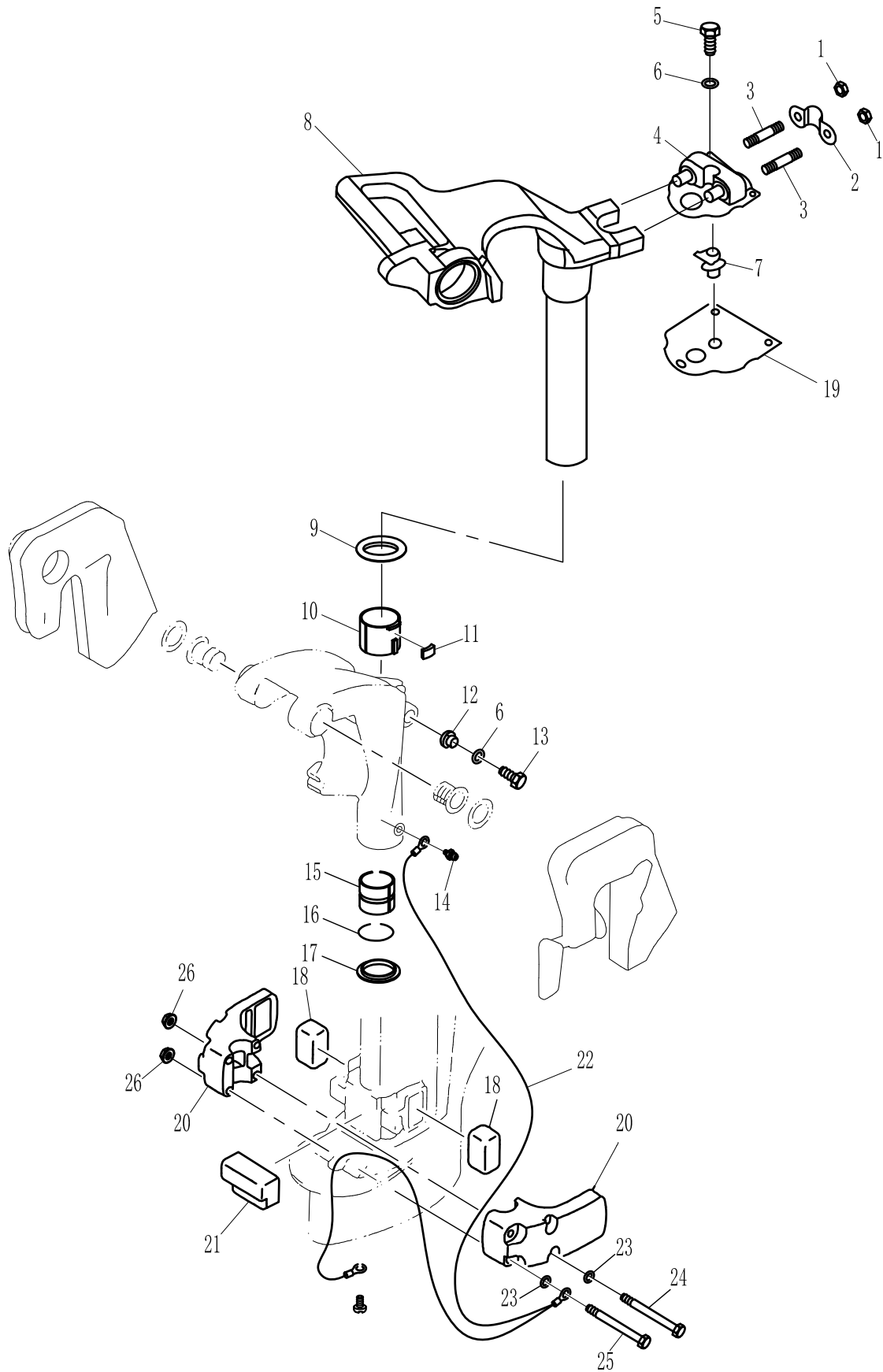
PARTS NAME: BRACKET 1



| SN. 参照号码 | PART NO. 零件编号 | DESCRIPTION 零件名称(中文) | DESCRIPTION 零件名称(英文) | QTY 数量 | | | | | REMARKS 备注 |
|-------------|------------------|-------------------------|-------------------------|-----------|--|--|--|--|---------------|
| 1 | F15-01010007 | 托架夹紧螺母 | NUT, SELF-LOCKING | 2 | | | | | |
| 2 | F15-01010003 | 双孔固定板 | PLATE, MOUNT DAMPER | 1 | | | | | |
| 3 | F15-01010001 | 夹紧托架双头螺管 | BOLT, CLAMP BRACKET | 1 | | | | | |
| 4 | F15-01010201 | 右夹紧托架 | BRACKET, RIGHT | 1 | | | | | |
| 5 | F15-01010103 | 扁六角轴位螺钉 | SCREW, FLAT HEXAGON | 4 | | | | | |
| 6 | F15-01010105 | 倾斜制动板 | PLATE, TILT STOPPER | 2 | | | | | |
| 7 | F15-01010104 | 波形垫圈 | WASHER, WAVE | 1 | | | | | |
| 8 | F15-01010202 | 接地钢索A | TIGHTWIRE, EARTHING A | 1 | | | | | |
| 9 | GB/T818-M6x8 | 十字槽盘头螺钉 M6x8 | SCREW M6x8 | 1 | | | | | |
| 10 | F15-01010002 | 螺管尼龙垫圈 | WASHER, NYLON | 2 | | | | | |

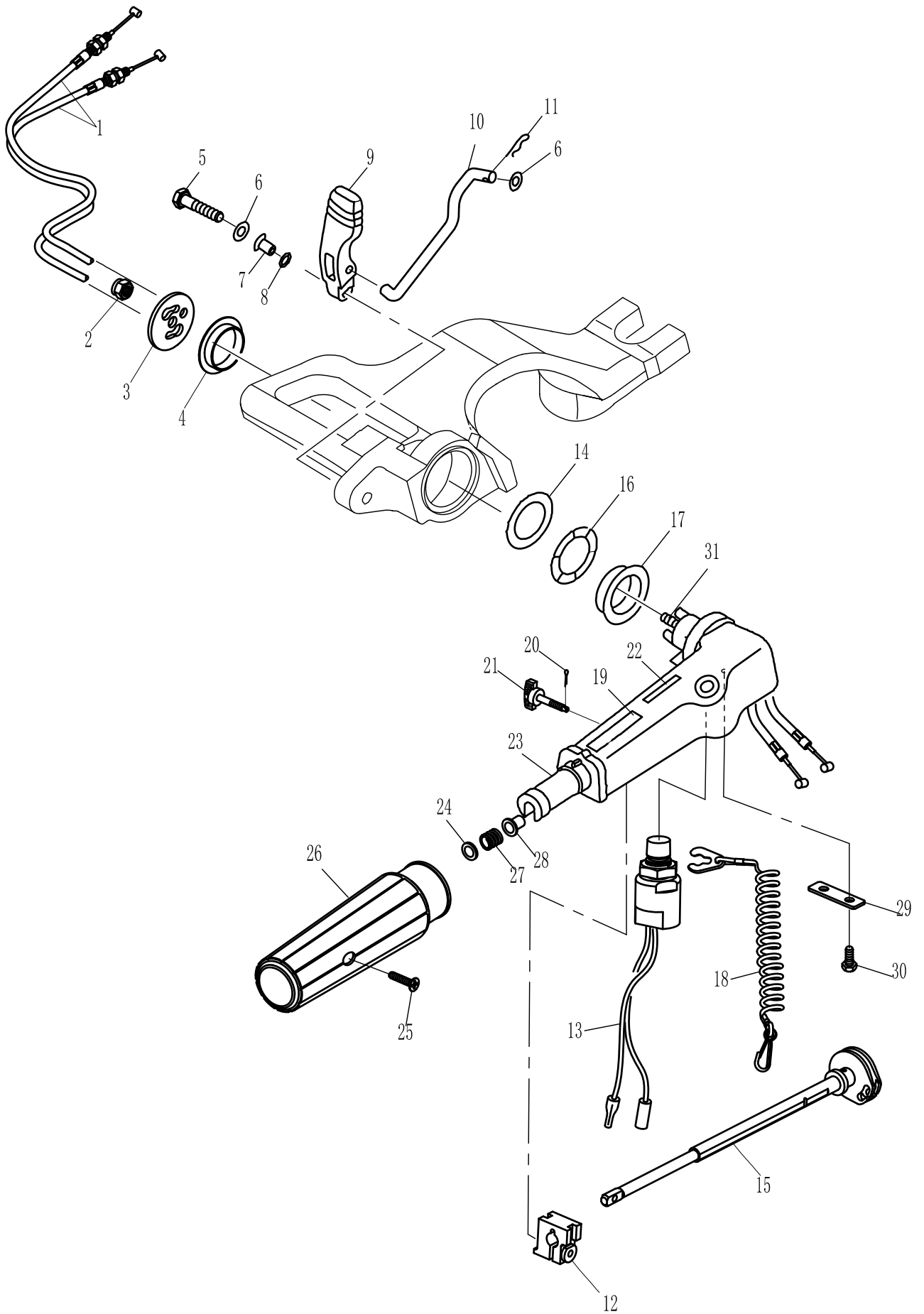
零部件名称: 托架 2

PARTS NAME: BRACKET 2



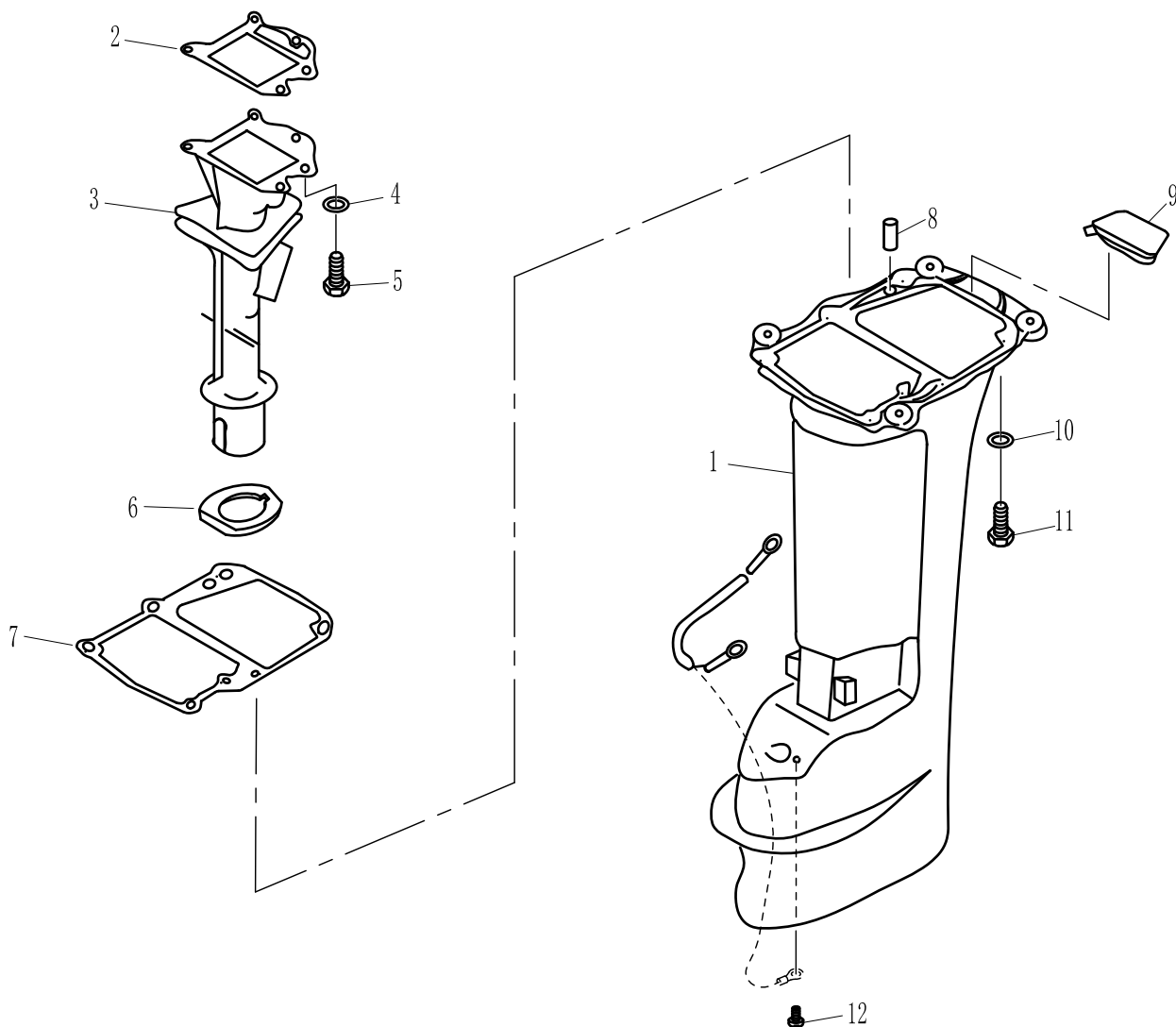
零部件名称: 操舵系统

PARTS NAME: STEERING



零部件名称: 水上装置壳体

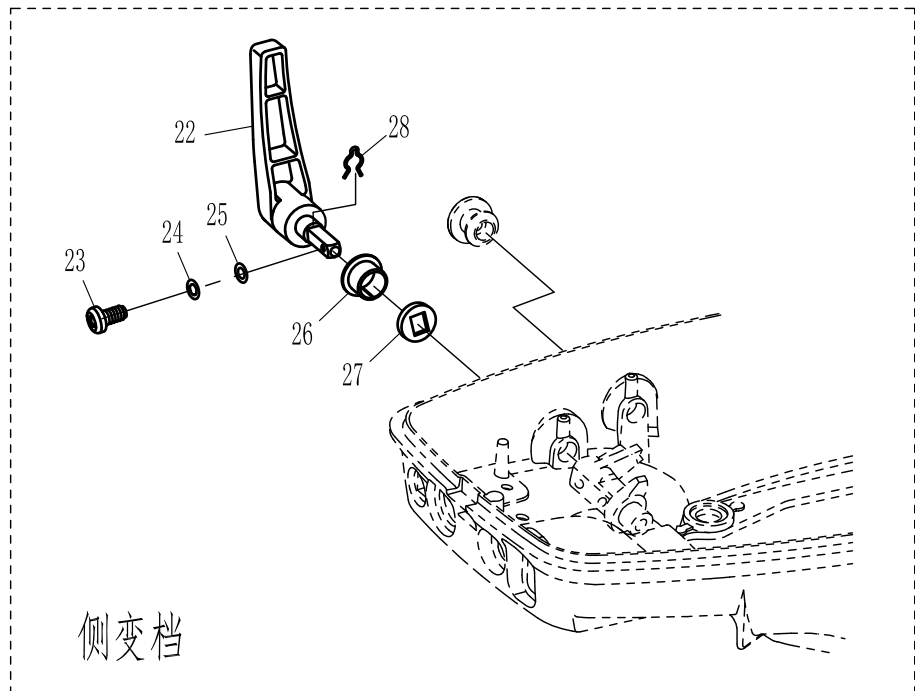
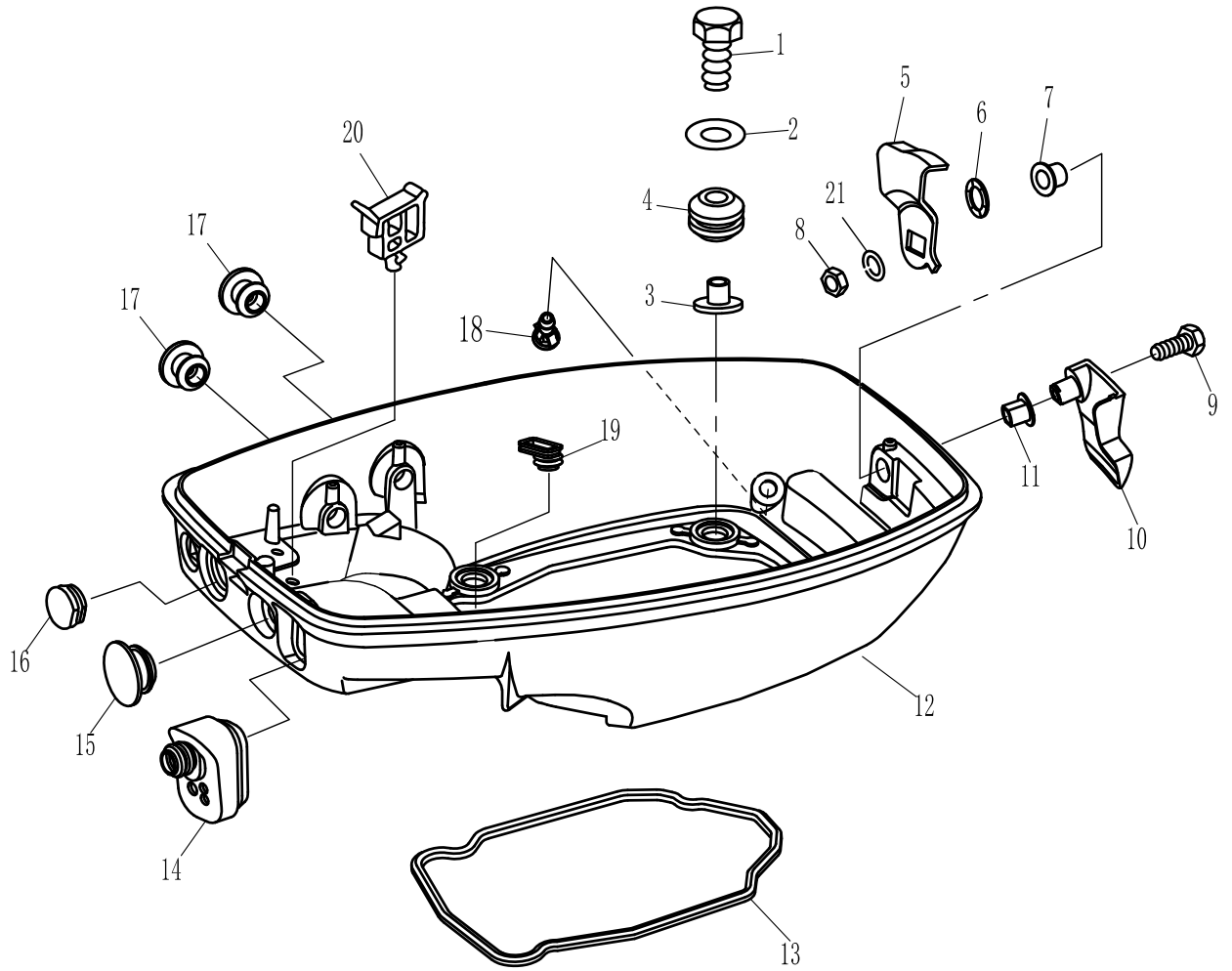
PARTS NAME: UPPER CASING



| SN. 参照号码 | PART NO. 零件编号 | DESCRIPTION 零件名称(中文) | DESCRIPTION 零件名称(英文) | QTY 数量 | | | | | REMARKS 备注 |
|-------------|------------------|-------------------------|---------------------------|-----------|--|--|--|--|---------------|
| 1 | T15-02000001L | 水上装置壳体 (L) | UPPER CASING (L) | 1 | | | | | L |
| | T15-02000001S | 水上装置壳体 (S) | UPPER CASING (S) | | | | | | S |
| 2 | T15-04000026 | 排气导管密封垫 | GASKET, EXHAUST PIPE | 1 | | | | | |
| 3 | T15-04000027 | 排气导管 | EXHAUST PIPE | 1 | | | | | |
| 4 | GB/T97.1-6 | 平垫圈6 | WASHER 6 | 5 | | | | | |
| 5 | GB/T5783-M6x20 | 六角螺栓M6x20 | BOLT M6x20 | 5 | | | | | |
| 6 | T15-04000028 | 排气导管减震圈 | DAMPER, EXHAUST PIPE | 1 | | | | | |
| 7 | T15-00000004 | 发动机密封垫 | GASKET, ENGINE | 1 | | | | | |
| 8 | F15-00000006 | 定位销Φ6x12 | DOWEL PIN Φ6x12 | 2 | | | | | |
| 9 | T15-02000005 | 水上装置橡胶堵头 | RUBBER PLUG, UPPER CASING | 1 | | | | | |
| 10 | GB/T97.1-8 | 平垫圈8 | WASHER 8 | 6 | | | | | |
| 11 | GB/T5783-M8x30 | 六角螺栓M8x30 | BOLT M8x30 | 6 | | | | | |
| 12 | GB/T818-M6x10 | 十字槽盘头螺钉M6x10 | SCREW M6x10 | 1 | | | | | |

零部件名称: 底罩

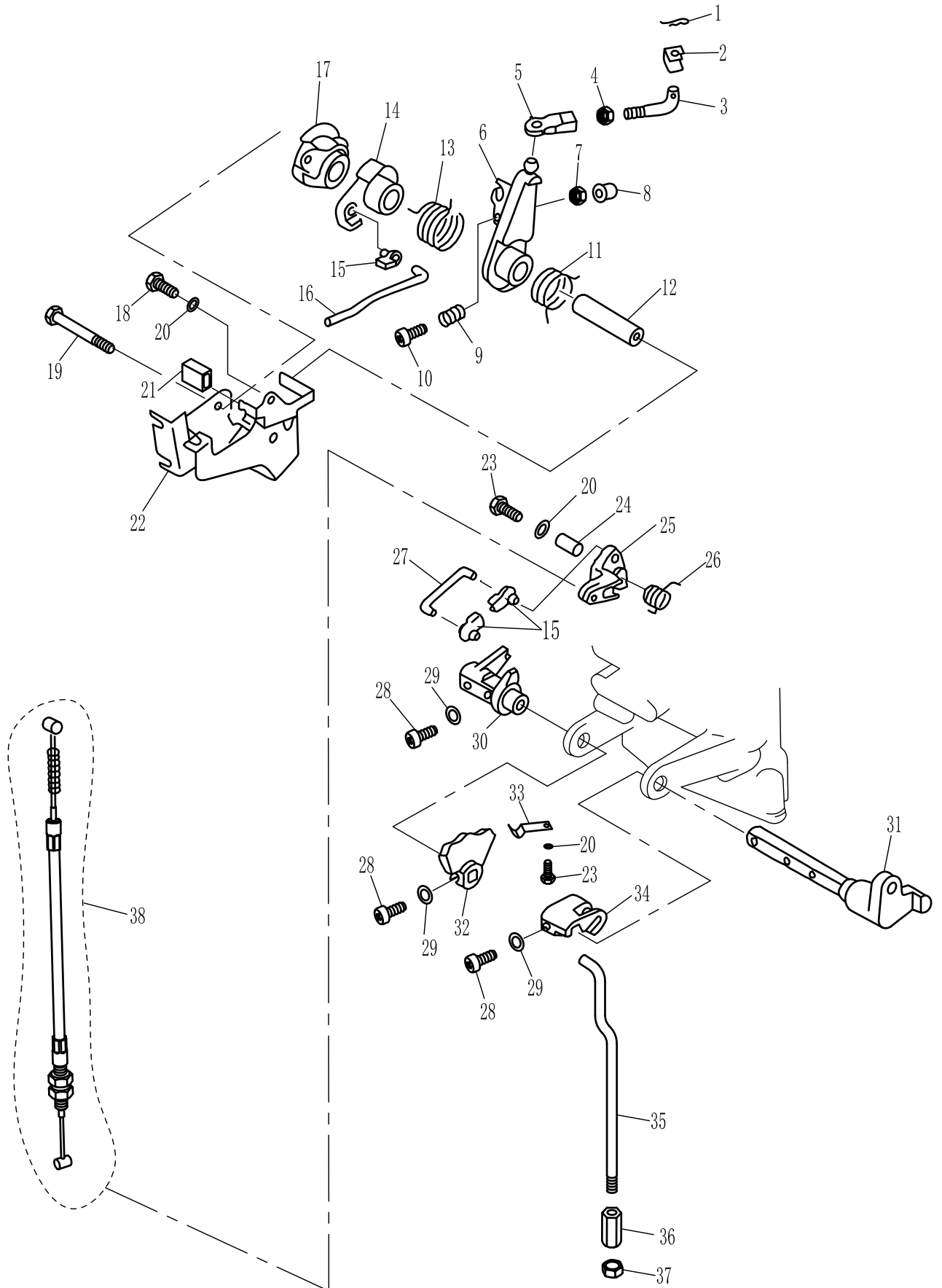
PARTS NAME: BOTTOM COWLING



侧变档

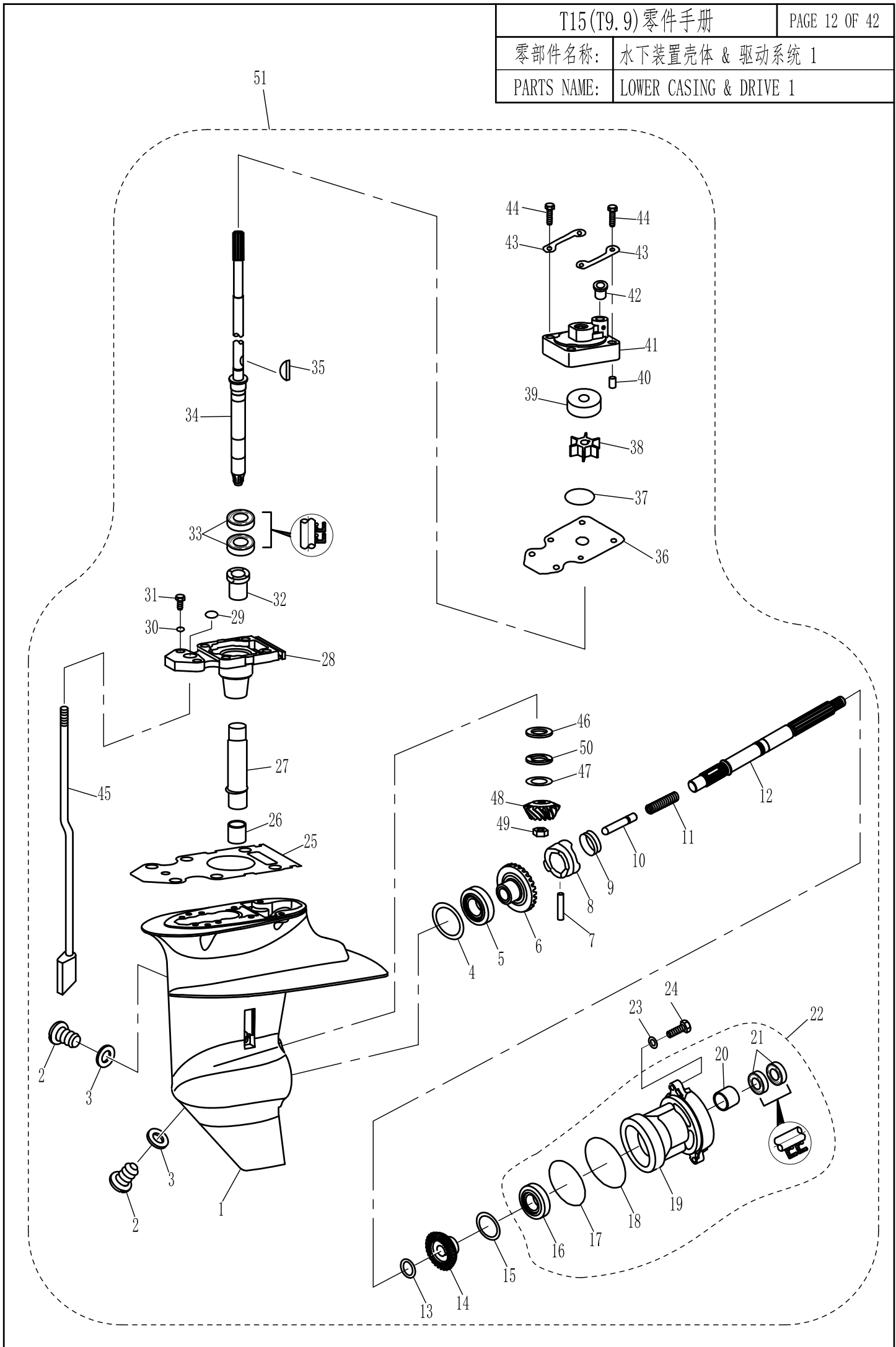
零部件名称: 控制系统

PARTS NAME: CONTROL SYSTEM



零部件名称: 水下装置壳体 & 驱动系统 1

PARTS NAME: LOWER CASING & DRIVE 1



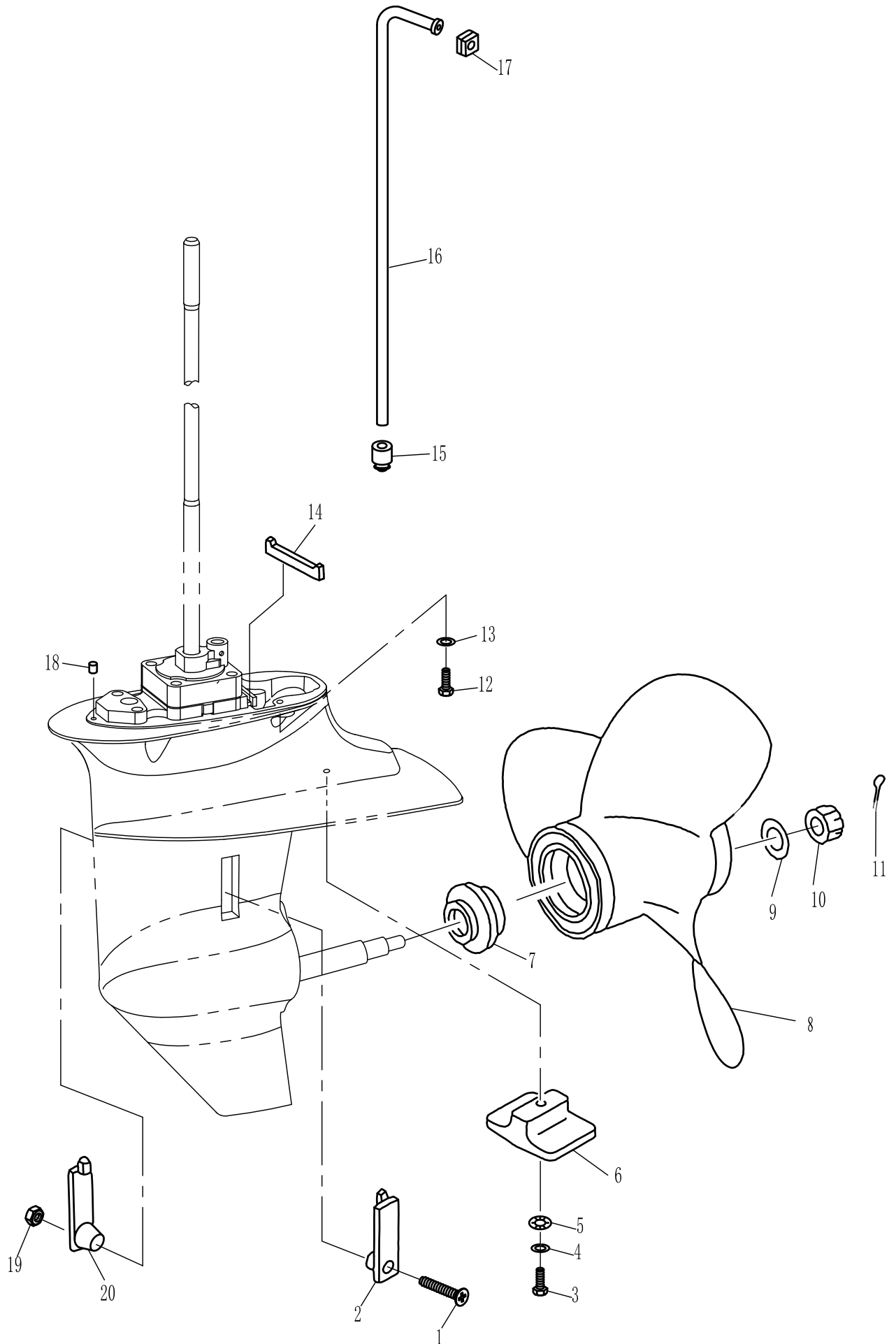
零部件名称: 水下装置壳体 & 驱动系统 1

PARTS NAME: LOWER CASING & DRIVE 1

| SN. 参照号码 | PART NO. 零件编号 | DESCRIPTION 零件名称(中文) | DESCRIPTION 零件名称(英文) | QTY 数量 | | | | REMARKS 备注 |
|-------------|------------------|-------------------------|-----------------------------|-----------|--|--|--|---------------|
| 1 | F15-06000001 | 水下装置壳体 | GEAR CASE | 1 | | | | |
| 2 | F4-03000023 | 注油孔螺塞 | PLUG, STRAIGHT SCREW | 2 | | | | |
| 3 | F4-03000024 | 注油孔螺塞密封垫 | GASKET, STRAIGHT SCREW PLUG | 2 | | | | |
| 4 | F15-06000010-1 | 正档齿轮填隙片(t:0.10毫米) | SHIM(t:0.10mm) | | | | | |
| | F15-06000010-2 | 正档齿轮填隙片(t:0.30毫米) | SHIM(t:0.30mm) | | | | | |
| | F15-06000010-3 | 正档齿轮填隙片(t:0.40毫米) | SHIM(t:0.40mm) | | | | | |
| | F15-06000010-4 | 正档齿轮填隙片(t:0.50毫米) | SHIM(t:0.50mm) | | | | | |
| 5 | NTN 4T-30205 1L | 圆锥滚子轴承 | BEARING 30205 | 1 | | | | |
| 6 | F15-06010000 | 正档齿轮组件 | FORWARD GEAR ASSY | 1 | | | | |
| 7 | F15-06070004 | 离合器销 | PIN, CLUTCH | 1 | | | | |
| 8 | F15-06070003 | 爪形离合器 | CLUTCH | 1 | | | | |
| 9 | F15-06070005 | 离合器环 | RING, CLUTCH | 1 | | | | |
| 10 | F15-06070006 | 变档柱塞 | PLUNGER, SHIFT | 1 | | | | |
| 11 | F15-06070002 | 离合器弹簧 | SPRING, CLUTCH | 1 | | | | |
| 12 | F15-06070001 | 螺旋桨轴 | SHAFT, PROPELLER | 1 | | | | |
| 13 | F15-06070007 | 倒档齿轮垫圈 | WASHER, REVERSE GEAR | 1 | | | | |
| 14 | F15-06080005 | 倒档齿轮 | GEAR, REVERSE | 1 | | | | |
| 15 | F15-06080006-1 | 倒档齿轮填隙片(t:0.10毫米) | SHIM(t:0.10mm) | | | | | |
| | F15-06080006-2 | 倒档齿轮填隙片(t:0.20毫米) | SHIM(t:0.20mm) | | | | | |
| | F15-06080006-3 | 倒档齿轮填隙片(t:0.30毫米) | SHIM(t:0.30mm) | | | | | |
| | F15-06080006-4 | 倒档齿轮填隙片(t:0.40毫米) | SHIM(t:0.40mm) | | | | | |
| | F15-06080006-5 | 倒档齿轮填隙片(t:0.50毫米) | SHIM(t:0.50mm) | | | | | |
| 16 | GB/T276-6005 | 深沟球轴承 6005 | BEARING 6005 | 1 | | | | |
| 17 | F15-06080002 | 水下壳体盖O型圈A | O-RING A, COVER | 1 | | | | |
| 18 | F15-06080003 | 水下壳体盖O型圈B | O-RING B, COVER | 1 | | | | |
| 19 | F15-06080001 | 水下装置壳体盖 | GEAR CASE GLAND | 1 | | | | |
| 20 | KOYO 17BM2312 | 滚针轴承 17BM2312 | BEARING 17BM2312 | 1 | | | | |
| 21 | F15-06080004 | 螺旋桨轴油封17x30x6(单唇) | OIL SEAL 17x30x6 | 2 | | | | |
| 22 | F15-06080000 | 水下装置壳体盖组件 | GLAND ASSY, GEAR CASE | 1 | | | | |
| 23 | GB/T97.1-6 | 平垫圈 6 | WASHER 6 | 2 | | | | |
| 24 | GB/T5783-M6x20 | 六角螺栓 M6x20 | BOLT M6x20 | 2 | | | | |
| 25 | F15-06000005 | 驱动轴座密封垫 | GASKET, DRIVE SHAFT BASE | 1 | | | | |
| 26 | NSK F1420 | 滚针轴承 F1420 | BEARING F1420 | 1 | | | | |
| 27 | F15-06000006 | 长尼龙套管 | BUSHING, NYLON | 1 | | | | |
| 28 | F15-06020001 | 驱动轴座 | BASE, DRIVE SHAFT | 1 | | | | |
| 29 | F15-06020004 | O型圈 | O-RING | 1 | | | | |
| 30 | GB/T97.1-8 | 平垫圈 8 | WASHER 8 | 2 | | | | |
| 31 | GB/T5783-M8x25 | 六角螺栓 M8x25 | BOLT M8x25 | 2 | | | | |
| 32 | F15-06020002 | 带挡边筒形轴承 | CYLINDRICAL BEARING | 1 | | | | |
| 33 | F15-06020003 | 驱动轴油封 20X30X6(单唇) | OIL SEAL 20x30x6 | 2 | | | | |
| 34 | F15-06040000L | 驱动轴组件(L) | DRIVE SHAFT ASSY (L) | 1 | | | | L |
| | F15-06040000S | 驱动轴组件(S) | DRIVE SHAFT ASSY (S) | | | | | S |
| 35 | F15-06000013 | 半圆键 | WOODRUFF KEY, FLYWHEEL | 1 | | | | |

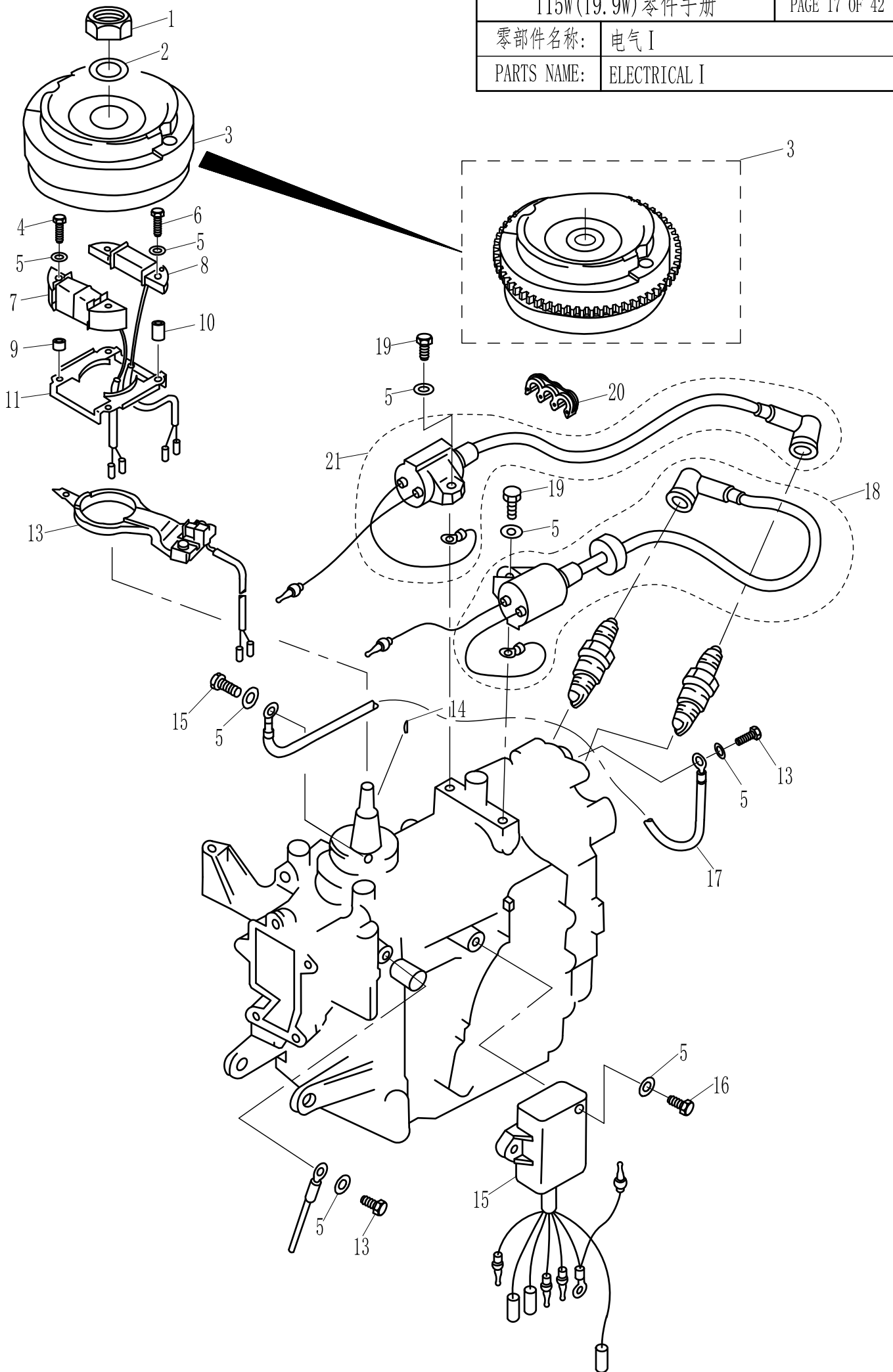
零部件名称: 水下装置壳体 & 驱动系统 2

PARTS NAME: LOWER CASING & DRIVE 2



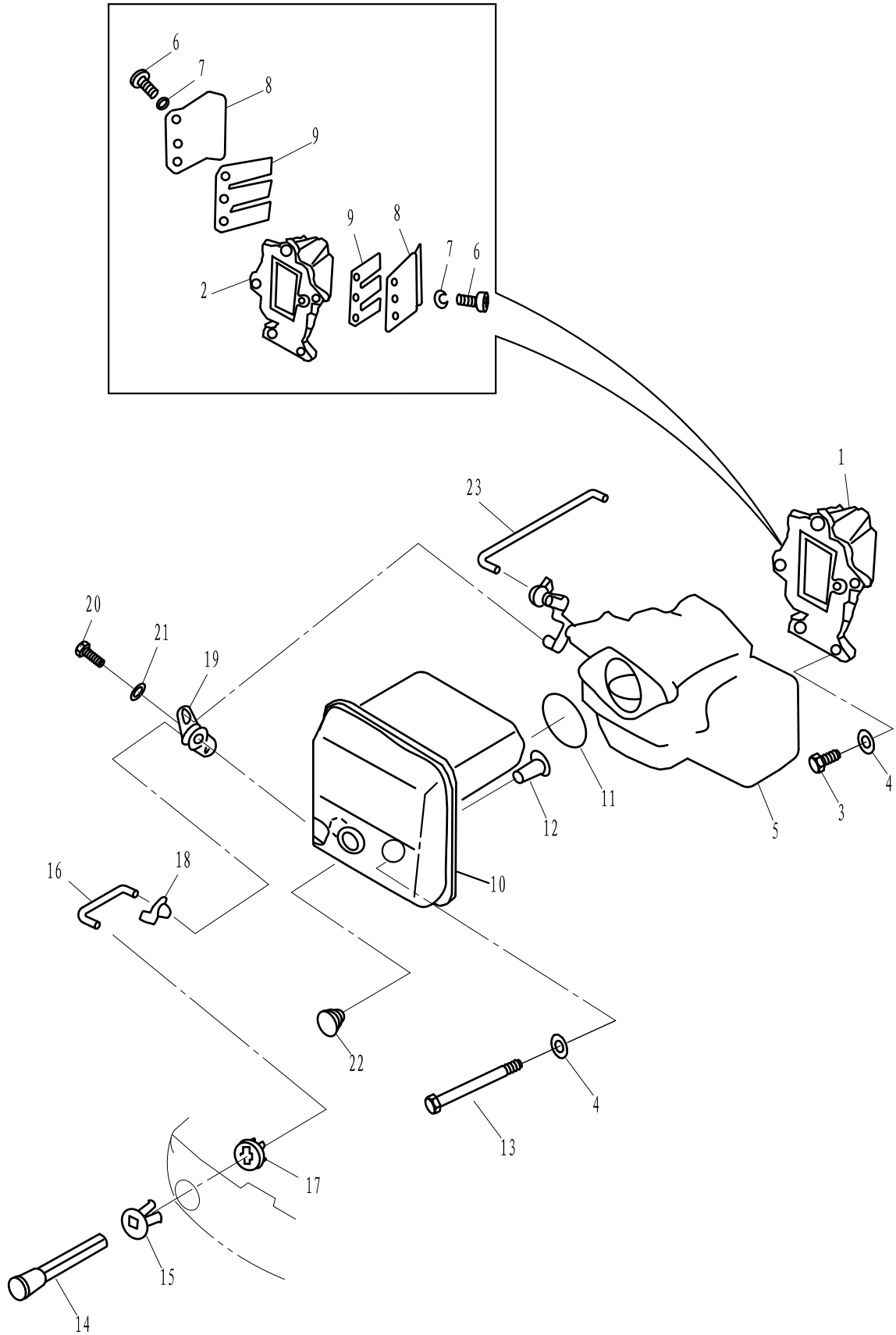
零部件名称: 电气 I

PARTS NAME: ELECTRICAL I



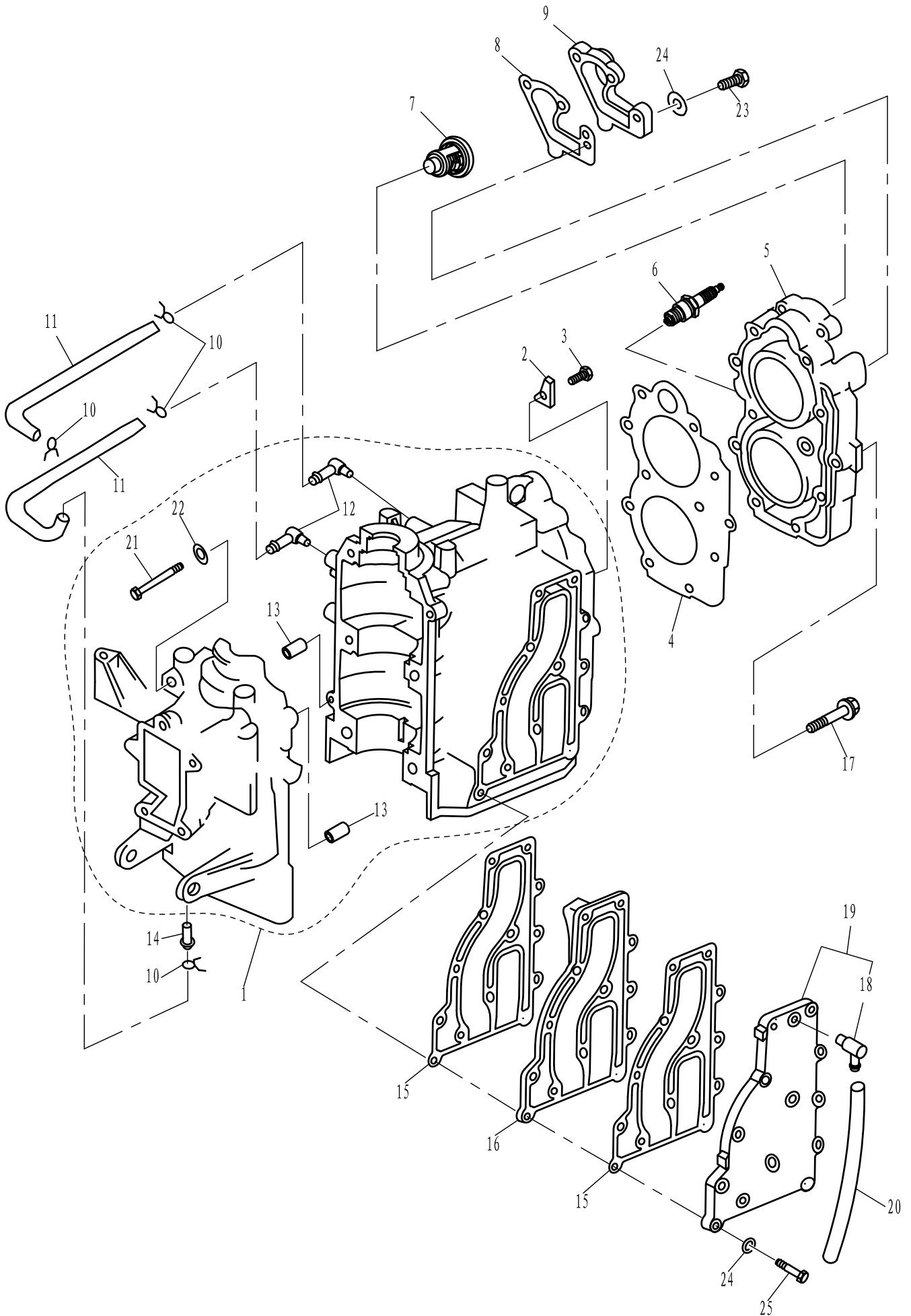
零部件名称: 进气系统

PARTS NAME: INTAKE



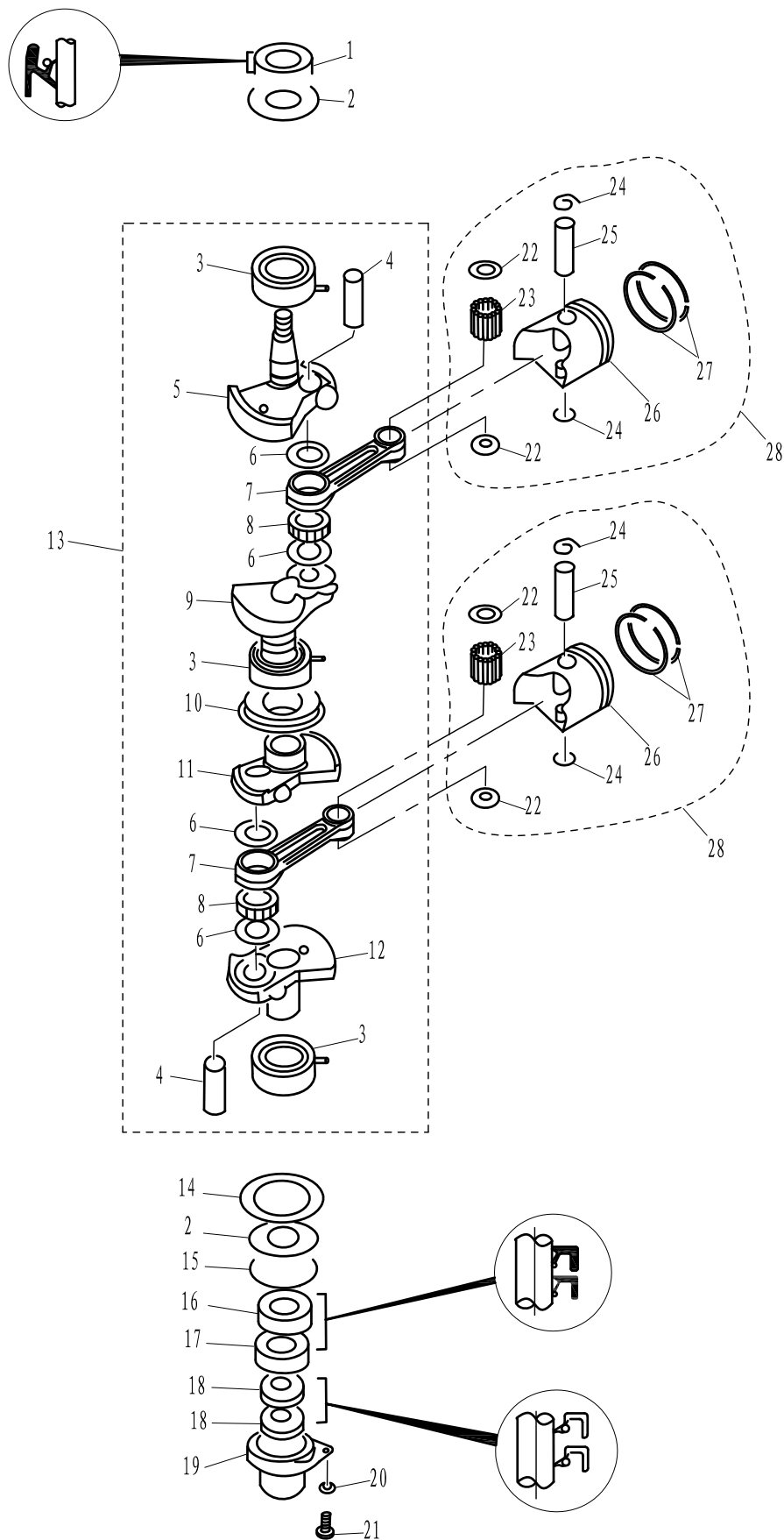
零部件名称: 气缸&曲轴箱

PARTS NAME: CYLINDER & CRANKCASE



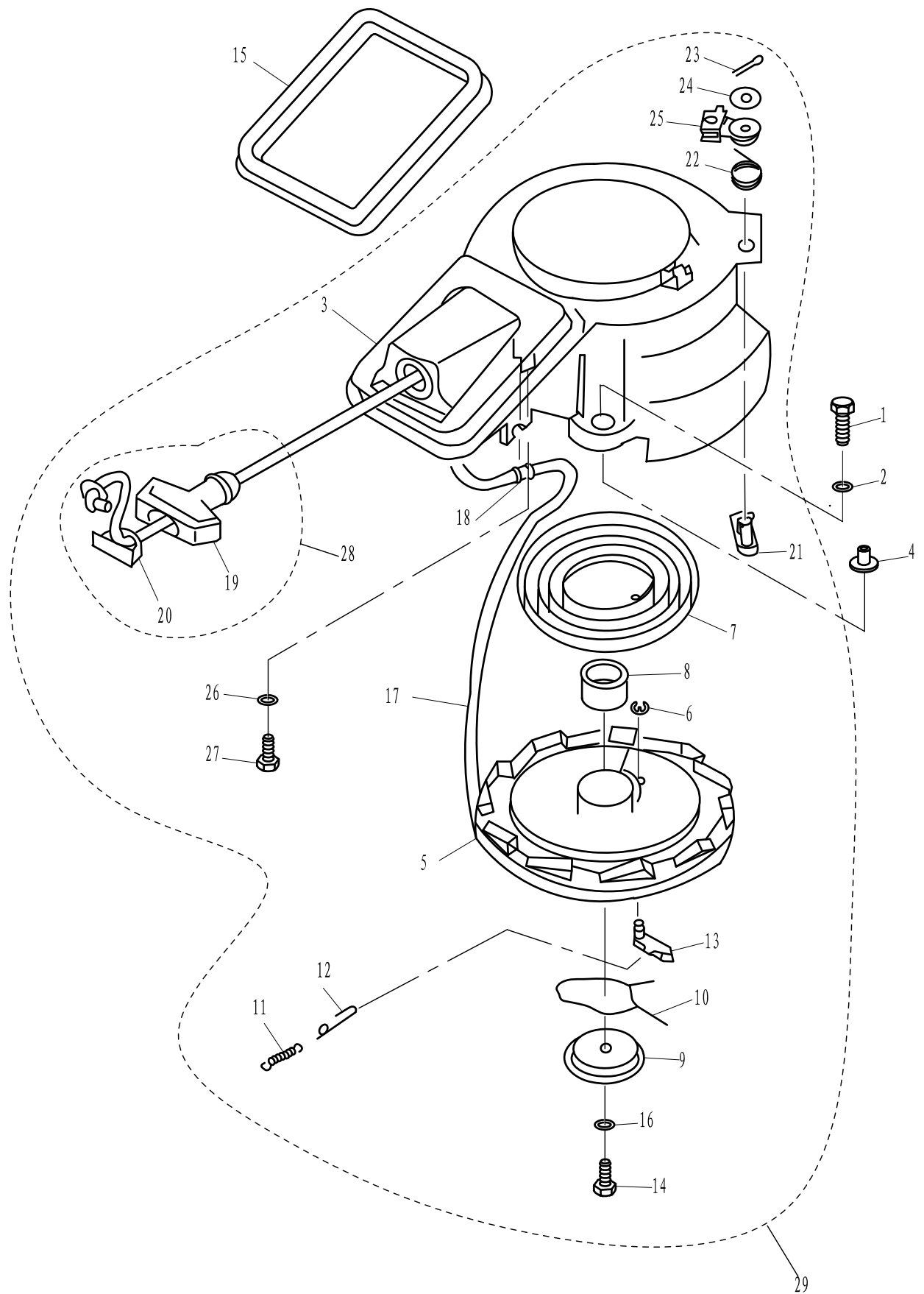
零部件名称: 曲轴&活塞

PARTS NAME: CRANKSHAFT & PISTON



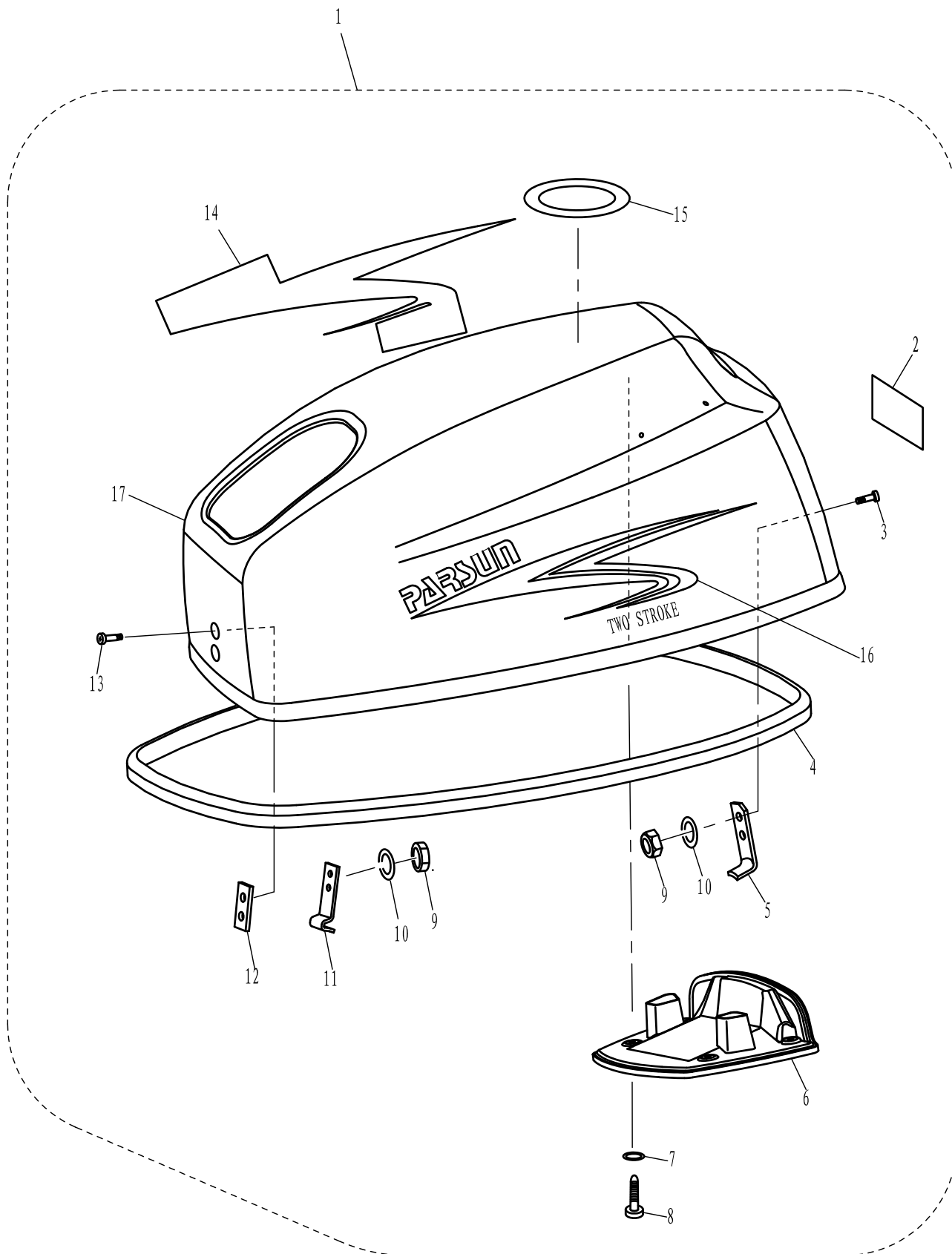
零部件名称: 起动器组件

PARTS NAME: STARTER



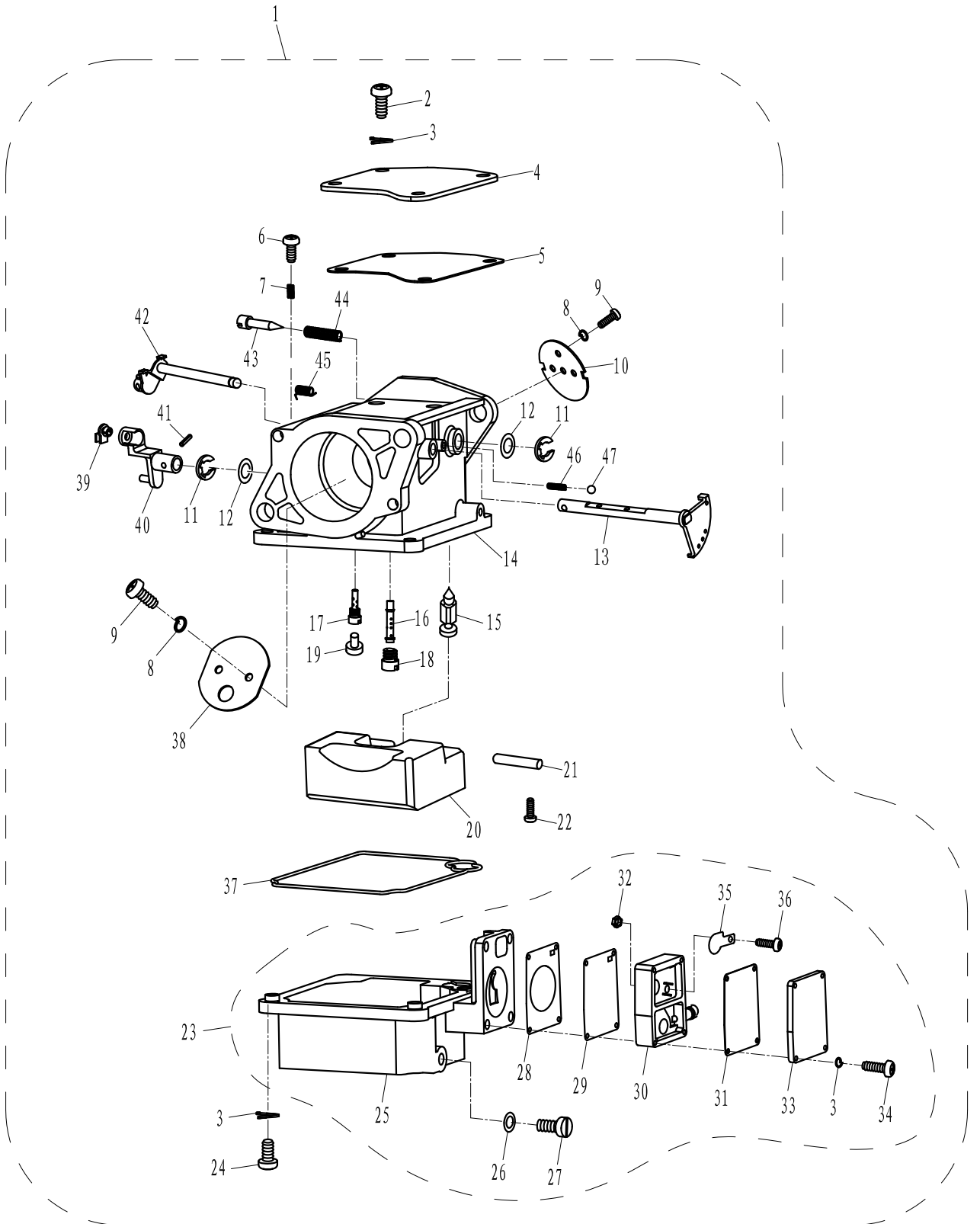
零部件名称: 顶罩组件

PARTS NAME: TOP COWLING ASSY



零部件名称: 化油器总成

PARTS NAME: CARBURETOR ASSY



| SN. 参照号码 | PART NO. 零件编号 | DESCRIPTION 零件名称 (中文) | DESCRIPTION 零件名称 (英文) | QTY 数量 | | | | | REMARKS 备注 |
|-------------|------------------|--------------------------|--------------------------|-----------|--|--|--|--|---------------|
| 1 | T15-04060000 | 化油器总成 | CARBURETOR ASSY | 1 | | | | | |
| 2 | GB/T818-M4x10 | 十字槽盘头螺钉 M4x10 | BOLT M4x10 | 4 | | | | | |
| 3 | GB/T94.1-4 | 弹性垫圈4 | SPRING WASHER 4 | 12 | | | | | |
| 4 | T15-04060003 | 面板 | PLATE | 1 | | | | | |

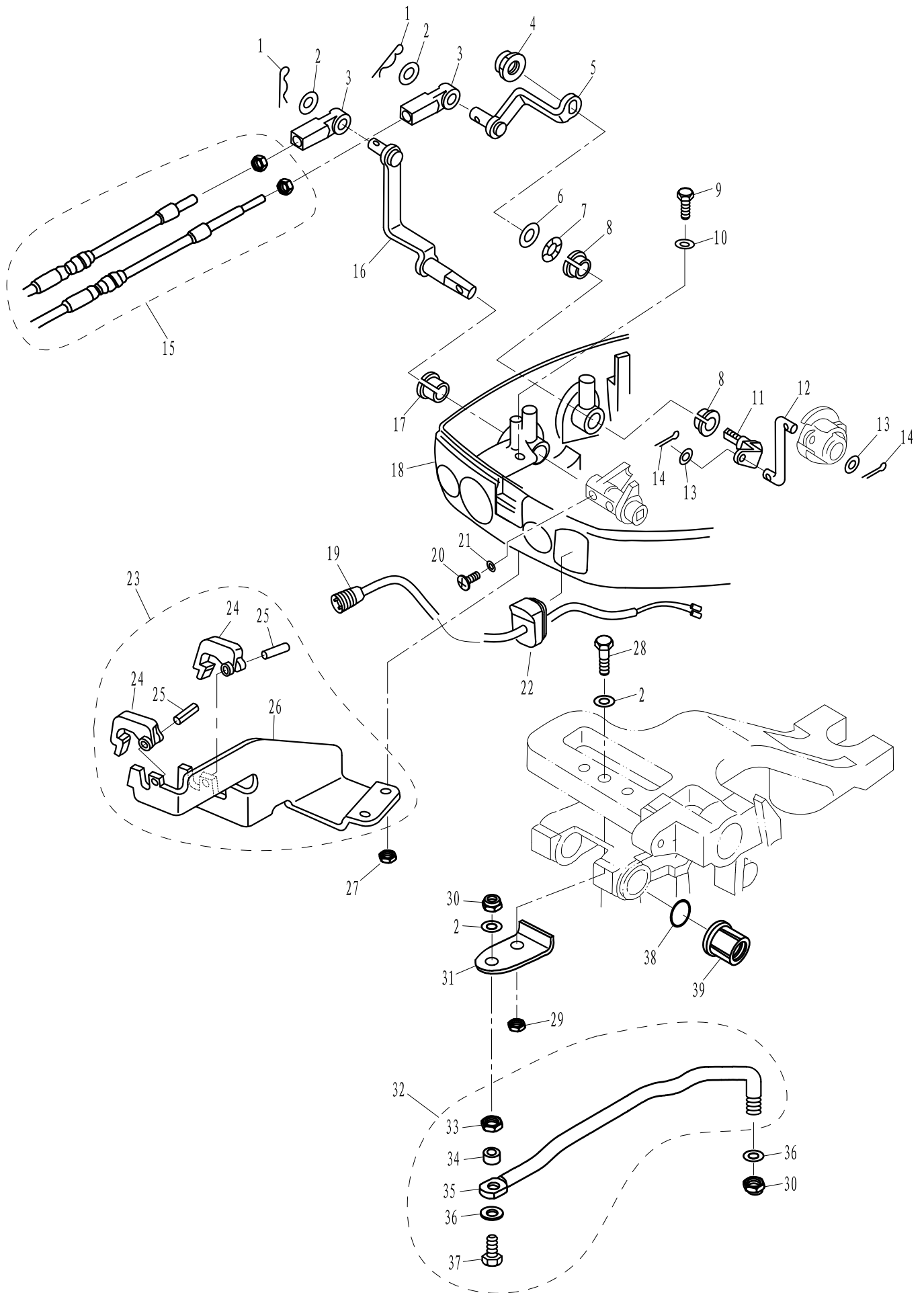
零部件名称: 化油器总成

PARTS NAME: CARBURETOR ASSY

| SN. 参照号码 | PART NO. 零件编号 | DESCRIPTION 零件名称 (中文) | DESCRIPTION 零件名称 (英文) | QTY 数量 | | | | REMARKS 备注 |
|-------------|------------------|--------------------------|------------------------------|-----------|--|--|--|---------------|
| 5 | T15-04060002 | 衬垫 | GASKET | 1 | | | | |
| 6 | T15-04060006 | 油门止动螺钉 | BOLT | 1 | | | | |
| 7 | T15-04060007 | 油门止动螺钉弹簧 | SPRING, THROTTLE | 1 | | | | |
| 8 | GB/T94. 1-3 | 弹性垫圈3 | SPRING WASHER 3 | 4 | | | | |
| 9 | GB/T818-M3x6 | 十字槽盘头螺钉 M3x6 | BOLT M3x6 | 1 | | | | |
| 10 | T15-04060104 | 油门挡板 | APRON, THROTTLE | 1 | | | | |
| 11 | GB/T896-4 | 开口挡圈 4 | CIRCLIP 4 | 2 | | | | |
| 12 | T15-04060102 | 摆杆尼龙衬圈 | WASHER | 2 | | | | |
| 13 | T15-04060201 | 阻风门摆杆 | SWING LINK, CHOKE | 1 | | | | |
| 14 | T15-04060001 | 化油器本体 | CARBURETOR BODY | 1 | | | | |
| 15 | T15-04060008 | 针阀 | NEEDLE VALVE | 1 | | | | |
| 16 | T15-04060011 | 主喷嘴 | MAIN NOZZLE | 1 | | | | |
| 17 | T15-04060013 | 怠速量孔 | IDLE JET | 1 | | | | |
| 18 | T15-04060012 | 主量孔 | MAIN JET | 1 | | | | |
| 19 | T15-04060014 | 胶帽 | RUBBER CAP | 1 | | | | |
| 20 | T15-04060009 | 浮子 | FLOAT | 1 | | | | |
| 21 | T15-04060010 | 浮子销 | PIN, FLOAT | 1 | | | | |
| 22 | GB/T818-M4x8 | 十字槽盘头螺钉 M4x8 | SCREW M4x8 | 1 | | | | |
| 23 | T15-04060300 | 油杯组件 | BODY, FLOAT CHAMBER | 1 | | | | |
| 24 | GB/T823-M4x14 | 十字槽小盘头螺钉 M4x14 | BOLT M4x14 | 4 | | | | |
| 25 | T15-04060301 | 油杯本体 | CUP, FUEL PUMP | 1 | | | | |
| 26 | T15-04060017 | 放油螺钉密封垫 | GASKET, FUEL DRAIN BOLT | 1 | | | | |
| 27 | T15-04060016 | 放油螺钉 | FUEL DRAIN BOLT | 1 | | | | |
| 28 | T15-04060302 | 燃油泵上隔膜 | UPPER DIAPHRAGM, FUEL PUMP | 1 | | | | |
| 29 | T15-04060303 | 燃油泵壳密封垫 | GASKET, FUEL PUMP | 1 | | | | |
| 30 | T15-04060304 | 燃油泵壳 | FUEL PUMP SHELL | 1 | | | | |
| 31 | T15-04060307 | 燃油泵下隔膜 | LOWER DIAPHRAGM, FUEL PUMP | 1 | | | | |
| 32 | GB/T6170-M3 | 六角螺母 M3 | NUT M3 | 2 | | | | |
| 33 | T15-04060308 | 燃油泵下盖 | LOWER COVER, FUEL PUMP | 1 | | | | |
| 34 | GB/T818-M4x22 | 十字槽盘头螺钉 M4x22 | SCREW M4x22 | 4 | | | | |
| 35 | T15-04060305 | 单向阀片 | CHECK VALVE | 1 | | | | |
| 36 | T15-04060306 | 阀片螺钉 | SCREW M3x5 | 1 | | | | |
| 37 | T15-04060015 | 化油器密封圈 | GASKET, CARBURETOR | 1 | | | | |
| 38 | T15-04060202 | 阻风门挡板 | APRON, CHOKE | 1 | | | | |
| 39 | T15-04060022 | 油门控制连杆接头 | TIE-IN, THROTTLE CONTROL ROD | 1 | | | | |
| 40 | T15-04060205 | 阻风门摆杆摇臂 | ROCKER ARM, CHOKE ROD | 1 | | | | |
| 41 | GB/T879. 2-2x10 | 轻型直槽弹性圆柱销 2x10 | PIN 2x10 | 1 | | | | |
| 42 | T15-04060100 | 油门摆杆组件 | THROTTLE BAR ASSY | 1 | | | | |
| 43 | T15-04060004 | 怠速螺钉 | SCREW, AIR ADJUSTING | 1 | | | | |
| 44 | T15-04060005 | 怠速螺钉弹簧 | SPRING, AIR ADJUSTING | 1 | | | | |
| 45 | T15-04060103 | 油门摆杆扭簧 | SWIST SPRING | 1 | | | | |
| 46 | T15-04060203 | 摆杆弹簧 | SWING LINK SPRING | 1 | | | | |
| 47 | T15-04060204 | 摆杆钢珠 | SWING LINK BALL | 1 | | | | |

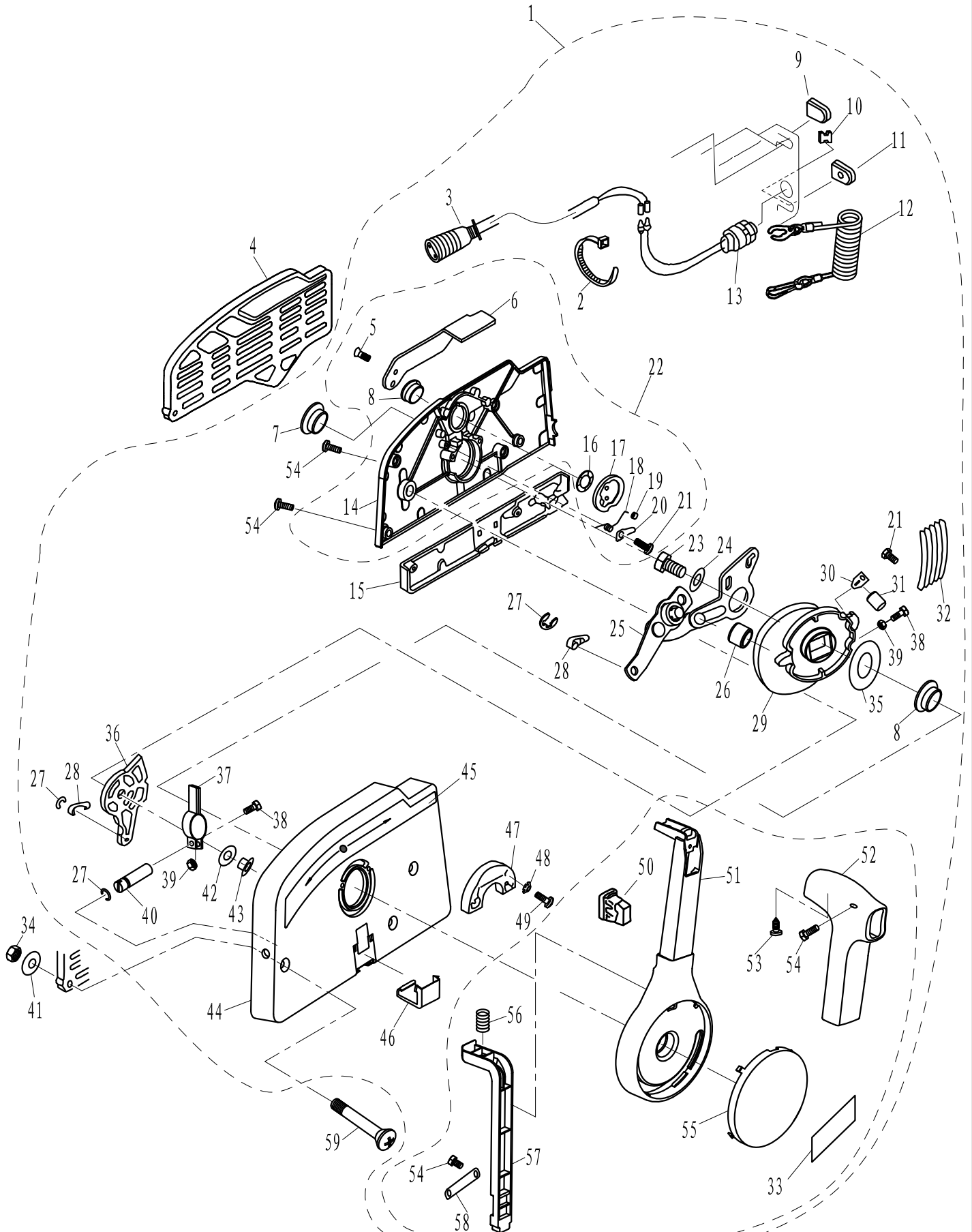
零部件名称: 控制系统(前操)

PARTS NAME: CONTROL SYSTEM (REMOTE CONTROL)



零部件名称: 操纵盒组件

PARTS NAME: CONTROL BOX ASSY



零部件名称:

操纵盒组件

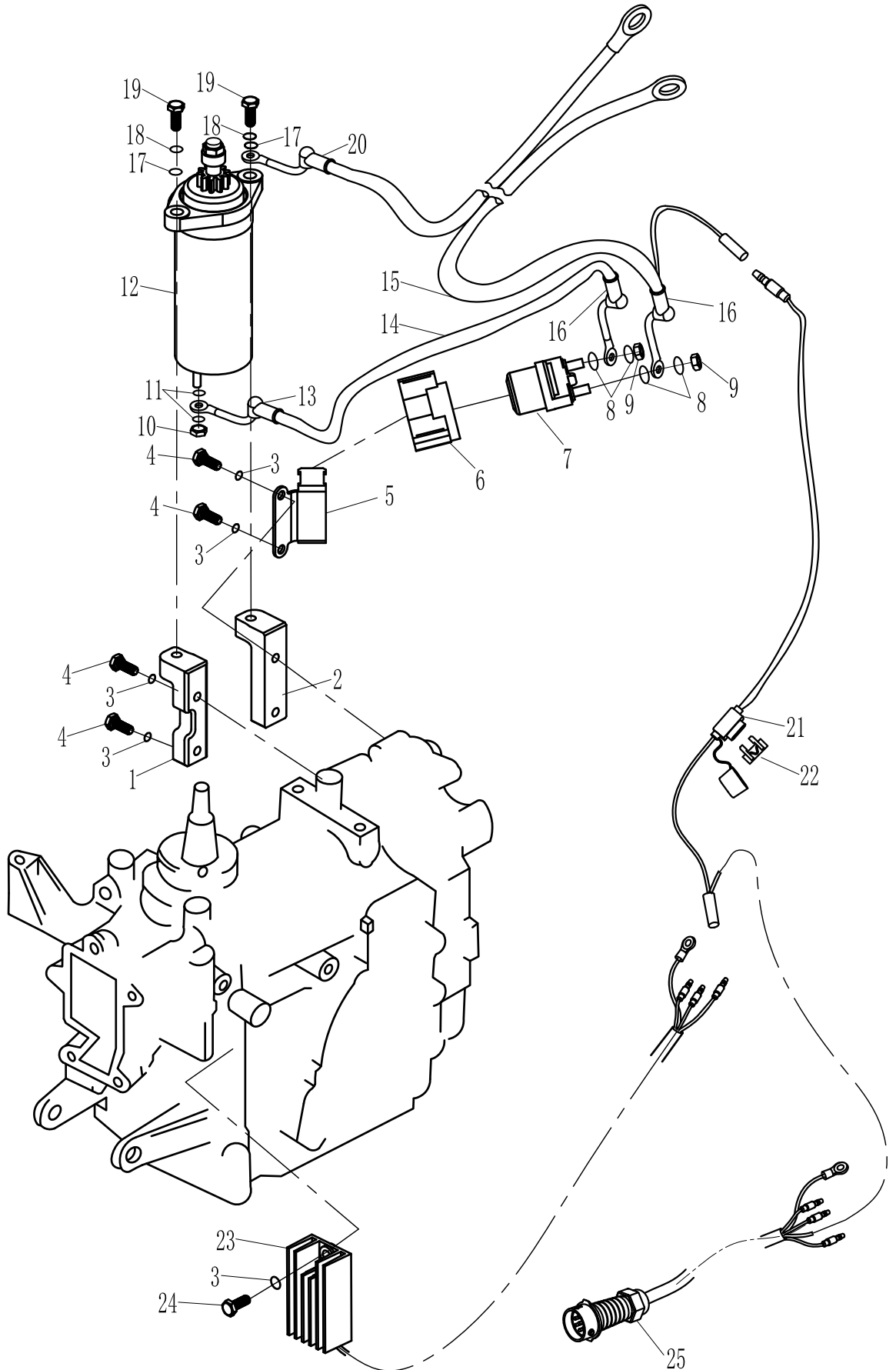
PARTS NAME:

CONTROL BOX ASSY

| SN. 参照号码 | PART NO. 零件编号 | DESCRIPTION 零件名称(中文) | DESCRIPTION 零件名称(英文) | QTY 数量 | | | | | REMARKS 备注 |
|-------------|------------------|-------------------------|---------------------------------|-----------|--|--|--|--|---------------|
| 1 | T15-1000000W | 操纵盒组件 | REMOTE CONTROL BOX | 1 | | | | | |
| 2 | HT2.5*60 | 尼龙扎带 | TIE, NYLON 60x2.5 | 2 | | | | | |
| 3 | T15-10000100W | 操纵线索组件 | CONTROL WIRE ASSY | 1 | | | | | |
| 4 | F15-11000002W | 操纵盒安装板 | MOUNT PLATE, CONTROL BOX | 1 | | | | | |
| 5 | GB/T819.2-M5x12 | 十字槽沉头螺钉 M5x12 | SCREW M5X12 | 2 | | | | | |
| 6 | F15-13020007W | 油门微调手柄 | NEUTRAL THROTTLE LEVER | 1 | | | | | |
| 7 | F15-13000005W | 凸轮机构衬套 | BUSHING, CAM | 2 | | | | | |
| 8 | F15-13020006W | 微调手柄衬套 | BUSHING, NEUTRAL THROTTLE LEVER | 1 | | | | | |
| 9 | T15-10000001W | 操纵盒座橡胶闷头A | RUBBER PLUG A | 1 | | | | | |
| 10 | F15-11000001W | 钢索橡胶垫块 | RUBBER BLOCK | 1 | | | | | |
| 11 | T15-10000002W | 操纵盒座橡胶闷头B | RUBBER PLUG B | 1 | | | | | |
| 12 | F4-01090401 | 引擎停止安全索 | STOPER, HANG ROPE ASSY | 1 | | | | | |
| 13 | F15-13000400W | 急停开关组件 | ENGINE STOP SWICH ASSY | 1 | | | | | |
| 14 | F15-13020001W | 操纵盒盖 | COVER, CONTROL BOX | 1 | | | | | |
| 15 | F15-13000013W | 操纵盒小盖板 | SMALL COVER, CONTROL BOX | 1 | | | | | |
| 16 | F15-13020005W | 波形垫圈 B | WAVE WASHER B | 1 | | | | | |
| 17 | F15-13020100W | 锁紧圆盘组件 | LOCKED DISK ASSY | 1 | | | | | |
| 18 | F15-13020002W | 扭簧 | TORSION SPRING | 1 | | | | | |
| 19 | F15-13020003W | 互锁滑轮 | LOCKED PULLEY | 1 | | | | | |
| 20 | F15-13020004W | 滑轮弹簧压板 | SPRING PLATE, PULLEY | 1 | | | | | |
| 21 | GB/T818-M4x6 | 十字槽盘头螺钉M4x6 | SCREW M4x6 | 2 | | | | | |
| 22 | F15-13020000W | 操纵盒盖组件 | COVER ASSY, CONTROL BOX | 1 | | | | | |
| 23 | GB/T5783-M8x30 | 六角螺栓 M8x30 | BOLT M8x30 | 1 | | | | | |
| 24 | GB/T97.1-8 | 平垫圈 8 | WASHER 8 | 1 | | | | | |
| 25 | F15-13000500W | 油门控制机构 | MACHINE, THROTTLE CONTROL | 1 | | | | | |
| 26 | F15-13000007W | 销轴垫圈 | WASHER | 1 | | | | | |
| 27 | GB/T896-6 | 开口挡圈 6 | COTTER 6 | 3 | | | | | |
| 28 | F25-07000007W | 操控钢索接头 B | CONTROL CABLE TIE-IN B | 2 | | | | | |
| 29 | F15-13000002W | 凸轮机构 | CAM MECHANISM | 1 | | | | | |
| 30 | F15-13000003W | 档位弹簧片压板 | SPRING PLATE | 1 | | | | | |
| 31 | F15-13000004W | 档位滑轮 | PULLEY | 1 | | | | | |
| 32 | F15-13000001W | 档位弹簧片 B | SHIFT SPRING LEAF B | 5 | | | | | |
| 33 | F15-12000016W | 标贴 16 | STICKER 16 | 1 | | | | | |
| 34 | GB/T6170-M6 | 六角螺母 M6 | NUT M6 | 3 | | | | | |
| 35 | F15-13000008W | 凸轮机构减磨片 | ANTIFRICTION WASHER, CAM | 1 | | | | | |
| 36 | F15-13000700W | 变档摆杆 | SHIFT SWING LINK | 1 | | | | | |
| 37 | F15-13000601W | 调节器固定板组件 | ADJUST FIXED PLATE | 1 | | | | | |
| 38 | GB/T5783-M5x25 | 六角螺栓 M5x25 | BOLT M5x25 | 2 | | | | | |
| 39 | GB/T6170-M5 | 六角螺母 M5 | NUT M5 | 2 | | | | | |
| 40 | F15-13000602W | 调节器销轴 | ADJUSTER PIN | 1 | | | | | |
| 41 | GB/T5287-6 | 特大垫圈 6 | BIG WASHER 6 | 3 | | | | | |
| 42 | F15-13000006W | 摆杆减磨片 | ANTIFRICTION WAHSER, SHIFTING | 1 | | | | | |
| 43 | F15-13000011W | 变档摆杆衬套 | BUSHING, SHIFT SWING LINK | 1 | | | | | |

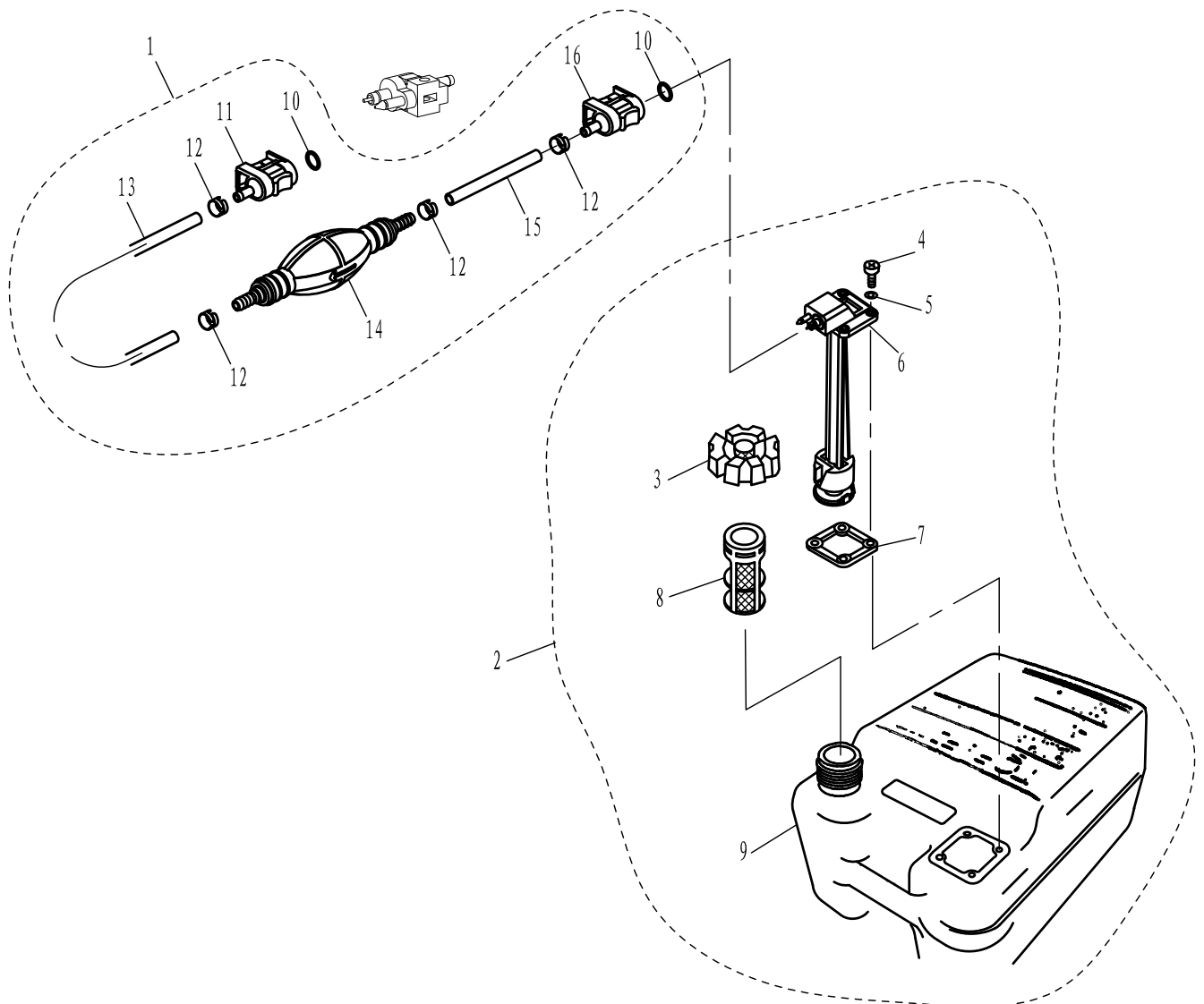
零部件名称: 电气 II

PARTS NAME: ELECTRICAL II



零部件名称: 燃油箱

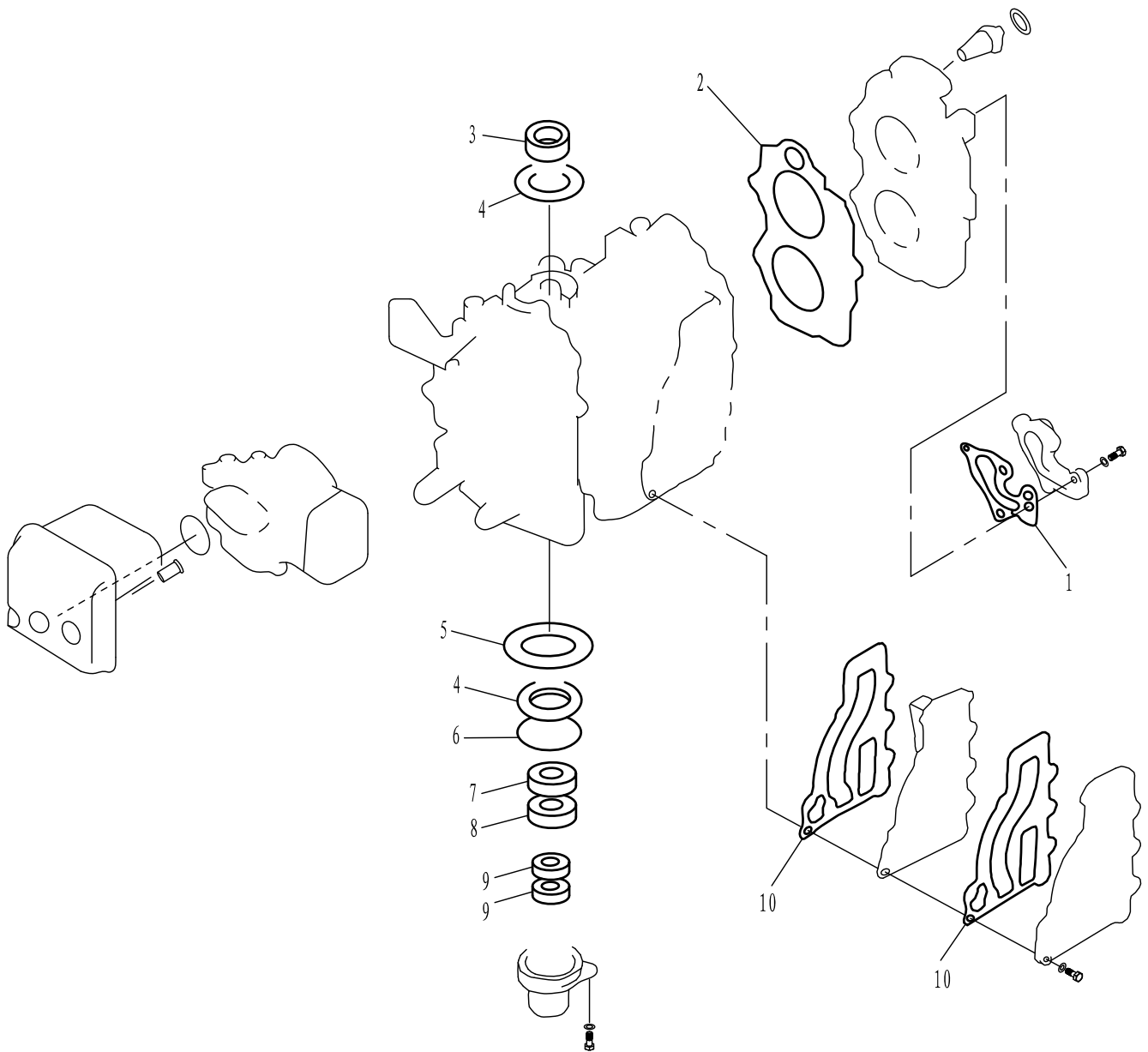
PARTS NAME: FUEL TANK



| SN. 参照号码 | PART NO. 零件编号 | DESCRIPTION 零件名称(中文) | DESCRIPTION 零件名称(英文) | QTY 数量 | | | | | REMARKS 备注 |
|-------------|------------------|-------------------------|---|-----------|--|--|--|--|---------------|
| 1 | F15-09000000 | 油管总成 | FUEL LINE ASSY | 1 | | | | | |
| 2 | F15-10000000 | 油箱组件 | FUEL TANK ASSY | 1 | | | | | |
| 3 | F15-10010000 | 油箱盖组件 | FUEL TANK CAP ASSY | 1 | | | | | |
| 4 | GB/T818-M5x16 | 十字槽盘头螺钉 Mx16 | SCREW M5x16 | 4 | | | | | |
| 5 | GB/T97.1-5 | 平垫圈 5 | WASHER 5 | 4 | | | | | |
| 6 | F15-10020000 | 油量表总成 | OLEOMETER ASSY | 1 | | | | | |
| 7 | F15-10000003 | 衬垫 | GASKET | 1 | | | | | |
| 8 | F15-10000002 | 油箱滤网 | STRAINER, FUEL TANK | 1 | | | | | |
| 9 | F15-10000001 | 油箱本体 | FUEL TANK | 1 | | | | | |
| 10 | JASO F404-78-31 | O形圈7.8x3.1 | O-RING 7.8x3.1 | 2 | | | | | |
| 11 | F15-09020000 | 燃油接头组件(出) | FUEL LINE CONNECTOR(ENGINE SIDE, FEMALE) | 1 | | | | | |
| 12 | F15-09000003 | 卡箍 B | CLAMP B | 4 | | | | | |
| 13 | F15-09000001 | 油管A(Φ10xΦ6Φ2080) | FUEL LINE A(Φ10xΦ6x2080) | 1 | | | | | |
| 14 | F15-09030000 | 手动油泵组件 | PRIMER BULB ASSY | 1 | | | | | |
| 15 | F15-09000002 | 油管B(Φ10xΦ6Φ850) | FUEL LINE B(Φ10xΦ6x850) | 1 | | | | | |
| 16 | F15-09010000 | 燃油接头组件(进) | FUEL LINE CONNECTOR(FUEL TANK SIDE, FEMALE) | 1 | | | | | |

零部件名称: 附录1 (修理套件)

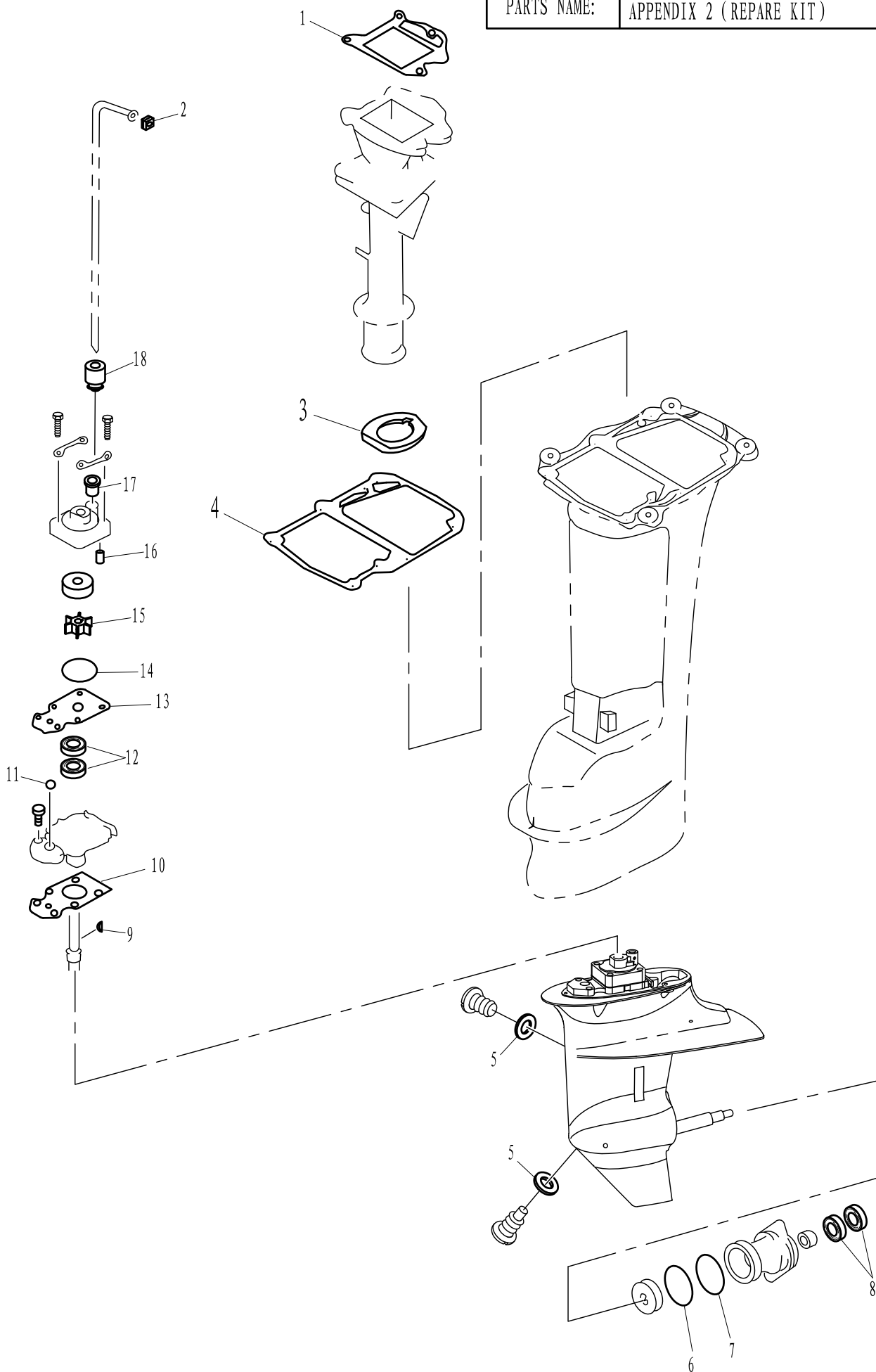
PARTS NAME: APPENDIX 1 (REPAIR KIT)



| SN. 参照号码 | PART NO. 零件编号 | DESCRIPTION 零件名称(中文) | DESCRIPTION 零件名称(英文) | QTY 数量 | | | | | REMARKS 备注 |
|-------------|------------------|-------------------------|---------------------------|-----------|--|--|--|--|---------------|
| 1 | T15-04000003 | 节温器盖垫 | GASKET, COVER | 2 | | | | | |
| 2 | T15-04000100 | 缸头复合垫 | GASKET, CYLINDER HEAD | 1 | | | | | |
| 3 | T15-04020107 | 曲轴油封 23x36x13-2 | OIL SEAL 23x36x13-2 | 2 | | | | | |
| 4 | T15-04020002 | 轴承盖板 | COVER PLATE, BEARING | 2 | | | | | |
| 5 | T15-04020001 | 曲轴定位片 | FIXED WASHER, CRANKSHAFT | 1 | | | | | |
| 6 | T15-04010402 | 油封壳体O形圈 | O-RING | 1 | | | | | |
| 7 | T15-04010403 | 油封壳体油封A 25x38x7-2 | OIL SEAL A 25x38x7-2 | 1 | | | | | |
| 8 | T15-04010404 | 油封壳体油封B 25x38x6 | OIL SEAL B 25x38x6 | 1 | | | | | |
| 9 | F15-04000008 | 骨架油封 13x25x6 | OIL SEAL SKELETON 13x25x6 | 2 | | | | | |
| 10 | T15-04010002 | 排气盖板垫 | GASKET, EXHAUST COVER | 2 | | | | | |

零部件名称: 附录2 (修理套件)

PARTS NAME: APPENDIX 2 (REPAIR KIT)



零部件名称:

零件目录检索表

PARTS NAME:

PARTS CATALOGUE INDEX

| 零件代号 PART NO. | 页码/序号 PAGE/NO. | 零件代号 PART NO. | 页码/序号 PAGE/NO. | 零件代号 PART NO. | 页码/序号 PAGE/NO. |
|------------------|-------------------|------------------|-------------------|------------------|-------------------|
| NGK BPR7HS | 22-6 | F15-01010103 | 1-5 | F15-06000010-1 | 13-4 |
| F4-01010003 | 2-42 | F15-01010104 | 1-7 | F15-06000010-2 | |
| F4-01010004 | 2-31 | F15-01010105 | 1-6 | F15-06000010-3 | |
| F4-01010005 | 2-29 | F15-01010200 | 2-43 | F15-06000010-4 | |
| F4-01090003 | 6-12 | F15-01010201 | 1-4 | F15-06000011 | 14-48 |
| F4-01090006 | 6-28 | F15-01010202 | 1-8 | F15-06000012 | 14-49 |
| F4-01090007 | 6-27 | F15-01010302 | 2-11 | F15-06000013 | 13-35 |
| F4-01090100 | 6-15 | F15-01010303 | 4-12 | F15-06000014 | 14-43 |
| F4-01090200 | 6-21 | F15-01010304 | 2-25 | F15-06000015 | 16-7 |
| F4-01090401 | 35-12 | F15-01010305 | 2-32 | F15-06000016 | 16-10 |
| F4-01090401 | 6-18 | F15-01010306 | 2-26 | F15-06000020-1 | 14-46 |
| F4-03000023 | 13-2 | F15-01010307 | 2-28 | F15-06010000 | 13-6 |
| F4-03000024 | 13-3 | F15-01010308 | 2-12 | F15-06020001 | 13-28 |
| F4-04000030 | 25-10 | F15-01010309 | 2-13 | F15-06020002 | 13-32 |
| F4-04060002 | 20-11 | F15-01010311 | 2-15 | F15-06020003 | 13-33 |
| F4-04130013 | 27-18 | F15-01010312 | 2-33 | F15-06020004 | 13-29 |
| F4-04130100 | 27-28 | F15-01010313 | 2-34 | F15-06020005 | 16-14 |
| F4-04130101 | 27-19 | F15-01010314 | 2-38 | F15-06040000L | 13-34 |
| F4-04130102 | 27-20 | F15-01010315 | 2-37 | F15-06040000S | |
| F4-05000200 | 25-1 | F15-01010316 | 2-23 | F15-06050000 | 14-38 |
| F4-06000004 | 29-7 | F15-01010317-1 | 2-39 | F15-06060001 | 14-41 |
| F4-06000005 | 29-5 | F15-01010317-2 | 2-36 | F15-06060002 | 14-39 |
| F4-06000006 | 29-12 | F15-01010317-3 | 2-35 | F15-06060004 | 14-42 |
| F4-08000104 | 6-19 | F15-01010400 | 2-18 | F15-06070001 | 13-12 |
| F4-08000105 | 6-22 | F15-01010402 | 2-19 | F15-06070002 | 13-11 |
| | | F15-02000004 | 16-15 | F15-06070003 | 13-8 |
| | | F15-02000006 | 16-17 | F15-06070004 | 13-7 |
| F8-03000005 | 9-28 | F15-04000005 | 22-18 | F15-06070005 | 13-9 |
| | | F15-04000008 | 24-18 | F15-06070006 | 13-10 |
| | | F15-05000004 | 9-4 | F15-06070007 | 13-13 |
| F15-00000006 | 7-8 | F15-05000005 | 9-3 | F15-06080000 | 13-22 |
| | 22-13 | F15-05000007 | 9-16 | F15-06080001 | 13-19 |
| F15-00000008 | 6-7 | F15-05000008 | 9-20 | F15-06080002 | 13-17 |
| F15-00000009 | 6-8 | F15-05000009 | 9-18 | F15-06080003 | 13-18 |
| F15-00000012 | 6-11 | F15-05000023 | 9-6 | F15-06080004 | 13-21 |
| | 33-1 | F15-05000033 | 9-19 | F15-06080005 | 13-14 |
| F15-00000013 | 14-40 | F15-05000035 | 11-36 | F15-06080006-1 | 13-15 |
| | 16-18 | F15-05010001 | 20-15 | F15-06080006-2 | |
| F15-01000001 | 4-10 | F15-05030002 | 9-21 | F15-06080006-3 | |
| F15-01000002 | 4-11 | F15-06000001 | 13-1 | F15-06080006-4 | |
| F15-01000003 | 4-9 | F15-06000002 | 16-20 | F15-06080006-5 | |
| F15-01000004 | 4-15 | F15-06000003 | 16-2 | F15-06090000-11 | 16-8 |
| F15-01000006 | 4-17 | F15-06000004 | 16-6 | F15-06090000-8 | |
| F15-01010001 | 1-3 | F15-06000005 | 13-25 | F15-07000004 | 18-14 |
| F15-01010002 | 1-10 | F15-06000006 | 13-27 | F15-07000016 | 11-15 |
| F15-01010003 | 1-2 | F15-06000007 | 14-36 | | 20-18 |
| F15-01010006 | 2-20 | F15-06000008 | 14-47 | F15-07020005 | 24-24 |
| F15-01010007 | 1-1 | F15-06000009 | | F15-07020006 | 24-25 |
| F15-01010100 | 2-16 | | | F15-07060001 | 38-23 |
| F15-01010102 | 2-30 | | | F15-07080000 | 25-4 |

零部件名称:

零件目录检索表

PARTS NAME:

PARTS CATALOGUE INDEX

| 零件代号 PART NO. | 页码/序号 PAGE/NO. | 零件代号 PART NO. | 页码/序号 PAGE/NO. | 零件代号 PART NO. | 页码/序号 PAGE/NO. |
|------------------|-------------------|------------------|-------------------|------------------|-------------------|
| F15-07080001 | 25-5 | F15-13000015W | 36-46 | T15-00000006 | 4-18 |
| F15-07080002 | 25-6 | F15-13000400W | 35-13 | T15-00000007 | 4-21 |
| F15-07130001 | 27-9 | F15-13000500W | 35-25 | T15-00000008 | 6-9 |
| F15-07130002 | 27-10 | F15-13000601W | 35-37 | T15-00000100-A | 9-22 |
| F15-07130107 | 27-7 | F15-13000602W | 35-40 | T15-00000101-A | 9-26 |
| F15-07130201 | 27-5 | F15-13000700W | 35-36 | T15-00000102-A | 9-27 |
| F15-07130202 | 27-13 | F15-13010001W | 36-51 | T15-01000001 | 6-17 |
| F15-07130203 | 27-11 | F15-13010002W | 36-52 | T15-01000002 | 6-16 |
| F15-07130204 | 27-12 | F15-13010003W | 36-50 | T15-01000003 | 6-14 |
| F15-07130205 | 27-17 | F15-13010004W | 36-57 | T15-01000004 | 6-4 |
| F15-07150001W | 38-22 | F15-13010005W | 36-56 | T15-01000005 | 6-3 |
| F15-07150200W | 38-15 | F15-13010008W | 36-58 | T15-01010001 | 4-8 |
| F15-07150300W | 38-7 | F15-13010009W | 36-55 | T15-01010301 | 2-14 |
| F15-07150301W | 38-6 | F15-13010010W | 36-47 | T15-01020001 | 6-23 |
| F15-07150500W | 38-14 | F15-13020000W | 35-22 | T15-01020002 | 6-29 |
| F15-07150501W | 38-16 | F15-13020001W | 35-14 | T15-01020003 | 6-13 |
| F15-08000004 | 29-11 | F15-13020002W | 35-18 | T15-01020100 | 6-1 |
| F15-09000000 | 39-1 | F15-13020003W | 35-19 | T15-01020400 | 6-26 |
| F15-09000001 | 39-13 | F15-13020004W | 35-20 | T15-02000001L | 7-1 |
| F15-09000002 | 39-15 | F15-13020005W | 35-16 | T15-02000001S | |
| F15-09000003 | 39-12 | F15-13020006W | 35-8 | T15-02000002 | 4-19 |
| F15-09010000 | 39-16 | F15-13020007W | 35-6 | T15-02000003 | 4-7 |
| F15-09020000 | 39-11 | F15-13020100W | 35-17 | T15-02000004L | 16-16 |
| F15-09030000 | 39-14 | | | T15-02000004S | |
| F15-10000000 | 39-2 | | | T15-02000005 | 7-9 |
| F15-10000001 | 39-9 | F20-03000202W | 33-24 | T15-02010000 | 4-4 |
| F15-10000002 | 39-8 | F20-04050000 | 16-8 | T15-02010100 | 4-22 |
| F15-10000003 | 39-7 | | | T15-03000001 | 9-12 |
| F15-10010000 | 39-3 | | | T15-03000001W | 33-18 |
| F15-10020000 | 39-6 | F25-01010012W | 33-39 | T15-03000002 | 9-14 |
| F15-11000001W | 35-10 | F25-05000016 | 18-20 | T15-03000004 | 9-17 |
| F15-11000002W | 35-4 | F25-05090100W | 38-21 | T15-03000007 | 9-15 |
| F15-11010000W | 33-15 | F25-05160002 | 11-1 | T15-03000008 | 9-11 |
| F15-11020000W | 33-32 | F25-05170201W | 38-20 | T15-03000009 | 9-5 |
| F15-11020001W | 33-35 | F25-05170202W | 38-13 | T15-03000011 | 9-10 |
| F15-11020002W | 33-37 | F25-07000005W | 33-3 | T15-03000012 | 9-7 |
| F15-11020003W | 33-31 | F25-07000006W | 33-30 | T15-03000015W | 33-22 |
| F15-12000013W | 36-45 | F25-07000007W | 35-28 | T15-03000021W | 33-8 |
| F15-12000016W | 35-33 | F25-07000303W | 33-34 | T15-03000022W | 33-7 |
| F15-13000001W | 35-32 | F25-07000304W | 33-33 | T15-03000023W | 33-17 |
| F15-13000002W | 35-29 | | | T15-03000024W | 33-12 |
| F15-13000003W | 35-30 | | | T15-03000100W | 33-11 |
| F15-13000004W | 35-31 | F40-05000021 | 25-9 | T15-03000200W | 33-5 |
| F15-13000005W | 35-7 | | | T15-03000300W | 33-16 |
| F15-13000006W | 35-42 | | | T15-03000400W | 33-23 |
| F15-13000007W | 35-26 | T15-00000001 | 4-2 | T15-03000401W | 33-26 |
| F15-13000008W | 35-35 | T15-00000002 | 9-13 | T15-03010001 | 20-14 |
| F15-13000011W | 35-43 | T15-00000003 | 6-10 | T15-03010002 | 20-17 |
| F15-13000012W | 36-44 | T15-00000004 | 7-7 | T15-03010003 | 20-16 |
| F15-13000013W | 35-15 | T15-00000005 | 4-20 | T15-03010004 | 20-19 |

零部件名称:

零件目录检索表

PARTS NAME:

PARTS CATALOGUE INDEX

| 零件代号 PART NO. | 页码/序号 PAGE/NO. | 零件代号 PART NO. | 页码/序号 PAGE/NO. | 零件代号 PART NO. | 页码/序号 PAGE/NO. |
|------------------|-------------------|------------------|-------------------|------------------|-------------------|
| T15-0400001 | 22-5 | T15-04010200 | 22-12 | T15-04060004 | 31-43 |
| T15-0400002 | 22-17 | T15-04010202 | 22-14 | T15-04060005 | 31-44 |
| T15-0400003 | 22-8 | T15-04010401 | 24-19 | T15-04060006 | 31-6 |
| T15-0400004 | 22-9 | T15-04010402 | 24-15 | T15-04060007 | 31-7 |
| T15-0400005 | 22-11 | T15-04010403 | 24-16 | T15-04060008 | 31-15 |
| T15-0400006 | 22-20 | T15-04010404 | 24-17 | T15-04060009 | 31-20 |
| T15-0400007 | 18-11 | T15-04010500 | 22-19 | T15-04060010 | 31-21 |
| T15-0400008 | 18-9 | T15-04020000A | 24-13 | T15-04060011 | 31-16 |
| T15-0400009 | 18-10 | T15-04020001 | 24-14 | T15-04060012 | 31-18 |
| T15-0400010 | 22-7 | T15-04020002 | 24-2 | T15-04060013 | 31-17 |
| T15-0400011 | 18-2 | T15-04020101 | 24-12 | T15-04060014 | 31-19 |
| T15-0400012 | 18-1 | T15-04020102 | 24-4 | T15-04060015 | 31-37 |
| T15-0400013 | 22-10 | T15-04020103 | 24-6 | T15-04060016 | 31-27 |
| T15-0400014 | 11-16 | T15-04020104 | 24-11 | T15-04060017 | 31-26 |
| T15-0400015 | 20-23 | T15-04020105 | 24-9 | T15-04060022 | 31-39 |
| T15-0400016 | 11-33 | T15-04020106 | 24-5 | T15-04060100 | 31-42 |
| T15-0400017 | 11-34 | T15-04020107 | 24-1 | T15-04060102 | 31-12 |
| T15-0400018 | 11-30 | T15-04020108 | 24-8 | T15-04060103 | 31-45 |
| T15-0400019 | 11-27 | T15-04020201A | 24-7 | T15-04060104 | 31-10 |
| T15-0400020 | 11-25 | T15-04020202 | 24-26 | T15-04060201 | 31-13 |
| T15-0400021 | 11-26 | T15-04020205 | 24-22 | T15-04060202 | 31-38 |
| T15-0400022 | 11-24 | T15-04020206 | 24-23 | T15-04060203 | 31-46 |
| T15-0400023 | 25-11 | T15-04020300 | 24-10 | T15-04060204 | 31-47 |
| T15-0400024 | 18-17 | T15-04020400 | 24-28 | T15-04060205 | 31-40 |
| T15-0400026 | 7-2 | T15-04020500 | 24-27 | T15-04060300 | 31-23 |
| T15-0400027 | 7-3 | T15-04030001 | 11-22 | T15-04060301 | 31-25 |
| T15-0400028 | 7-6 | T15-04030002 | 11-21 | T15-04060302 | 31-28 |
| T15-0400029 | 11-35 | T15-04030003 | 11-12 | T15-04060303 | 31-29 |
| T15-0400030W | 38-1 | T15-04030004 | 11-17 | T15-04060304 | 31-30 |
| T15-0400031W | 38-2 | T15-04030005 | 11-14 | T15-04060305 | 31-35 |
| T15-0400032W | 38-5 | T15-04030006 | 11-13 | T15-04060306 | 31-36 |
| T15-0400035W | 38-25 | T15-04030007 | 11-11 | T15-04060307 | 31-31 |
| T15-04000100 | 22-4 | T15-04030101 | 11-6 | T15-04060308 | 31-33 |
| T15-04000200 | 18-8 | T15-04030102 | 11-9 | T15-04070000 | 27-29 |
| T15-04000300 | 18-7 | T15-04030103 | 11-8 | T15-04070001 | 27-21 |
| T15-04000400 | 18-3 | T15-04040000 | 18-12 | T15-04070002 | 27-22 |
| T15-04000400W | 18-3 | T15-04040003 | 11-2 | T15-04070003 | 27-25 |
| T15-04000500 | 20-10 | T15-04040004 | 11-3 | T15-04070004 | 27-24 |
| T15-04000504 | 20-12 | T15-04040005 | 11-5 | T15-04070005 | 27-15 |
| T15-04000505 | 20-22 | T15-04050000 | 20-1 | T15-04070006 | 27-8 |
| T15-04000600 | 11-31 | T9.9-04050000 | | T15-04070101 | 27-3 |
| T15-04000700 | 11-32 | T15-04050001 | 20-9 | T15-04070102 | 27-4 |
| T15-04000800 | 11-38 | T15-04050002 | 20-8 | T15-05000000 | 29-1 |
| T15-04000900 | 18-15 | T9.9-04050002 | | T15-05000001 | 29-17 |
| T15-04001100 | 18-21 | T15-04050100 | 20-2 | T15-05000002 | 29-4 |
| T15-04001200 | 18-18 | T15-04060000 | 20-5 | T15-05000003 | 29-6 |
| T15-04001300W | 38-12 | T15-04060000 | 30-1 | T15-06000001 | 29-16 |
| T15-04010002 | 22-15 | T15-04060001 | 31-14 | T15-06000002 | 29-14 |
| T15-04010003 | 22-16 | T15-04060002 | 31-5 | T15-06000003 | 29-2 |
| T15-04010103 | 22-2 | T15-04060003 | 30-4 | T15-06000004 | |

零部件名称:

零件目录检索表

PARTS NAME:

PARTS CATALOGUE INDEX

| 零件代号 PART NO. | 页码/序号 PAGE/NO. | 零件代号 PART NO. | 页码/序号 PAGE/NO. | 零件代号 PART NO. | 页码/序号 PAGE/NO. |
|------------------|-------------------|------------------|-------------------|------------------|-------------------|
| T15-06000005 | 29-15 | | | | |
| T15-07010000 | 22-1 | | | | |
| T15-08000000L | 14-51 | | | | |
| T15-08000000S | | | | | |
| T15-08010000L | 14-45 | | | | |
| T15-08010000S | | | | | |
| T15-10000000W | 35-1 | | | | |
| T15-10000001W | 35-9 | | | | |
| T15-10000002W | 35-11 | | | | |
| T15-10000100W | 35-3 | | | | |
| T15-13000500W | 33-19 | | | | |
| TE15-04000018 | 14-50 | | | | |
| TE15-04020000 | 16-8 | | | | |